



SA Dairyfarmers' Association Inc  
Unit 5, 780 South Road, Glandore SA 5037

P: 8293 2399 E: [sada@sada.asn.au](mailto:sada@sada.asn.au)

[www.sada.asn.au](http://www.sada.asn.au)

Or find us on Facebook

# SADA NEWSLETTERS 2020







SA Dairyfarmers' Association Inc  
 Unit 5, 780 South Road, Glandore SA 5037  
 P: 8293 2399 E: [sada@sada.asn.au](mailto:sada@sada.asn.au)  
[www.sada.asn.au](http://www.sada.asn.au)  
 Or find us on Facebook

January 2020

## SADA NEWSLETTER

# All hands on deck for joint SADA and Livestock SA response to SA Bushfires

SADA and Livestock SA have teamed up to help farmers impacted by the South Australian bushfires, assisting where ever each organisation was required. There is little doubt that it has been many years since farmers in South Australia have suffered as much as a result of fires in this state.

Dairy farmers in the hills have a mixed bag of stories ranging from close escapes to utter devastation. SADA and Livestock SA were quick to establish a feed collection point at Oakbank. While there are no dairies on Kangaroo Island SADA was happy to lend its personnel to the cause of getting food onto the island to help our fellow farmers in the state.

Cudlee Creek fire impacted approximately 530 PICs (properties). Stock losses are in the order 3600 head - mainly sheep. Livestock SA has been managing the fodder depot since 23 December. Approximately 850 tonnes of donated fodder has been received and for the most part disbursed to date. The depot will operate as required until 20 Jan. We are now

working with producers (large and small) to plan for the coming months .

The Keilira fire was another fire SADA responded to. The



fire scar estimate is west of Ballater Road, has crossed over Woolumbool Road to the east. It's north of Long Island and east of Blackford Taratap Range. Fire has many fingers travelling in a northerly direction with most of the northern edge active. High voltage power lines in path of fire control. At least

23,000 hectares has been burnt, consisting of livestock (sheep & cattle), cropping and native vegetation. At least

15 PICs in the area are being contacted. Significant livestock losses (1000s) are indicated but no firm data as yet.



One PIRSA team is visiting properties today. Livestock SA is in contact with many affected producers and will work to ensure support is provided as needed. Many proper-

ties are utilising existing networks to access emergency fodder.

### In this issue:

- Joint SA Bushfire Response
- 2019 Year in review from the President
- SA Dairy Farmer elected to ADF Board
- South Australian Dairy Summit Wrap Up
- Trust in Ag Wrap Up
- Dairy outlook brings mixed picture as domestic value rises
- SADA visit to World Export Trade Fair
- Dairy numbers drop across SA
- Farm Trespass Laws
- Dairy SA Central Conference



# 2019 Year in Review from the President

Reflecting on the past year I always try and measure our relevance in the **advocacy** space and what benefits we are delivering to our members. We have reporting measures to gauge the performance of the organisation, though sometimes hard to explain to members our door is always open.

The season itself has been challenging for some in the north and **drought** has taken its toll. Great to see Government offering some relief by releasing the water for fodder scheme, also council rates and pastoral rent reductions and more funding for rural business support to help farmers make decisions around their future.

The **GM debate** did not go as planned when politics got in the way of an outcome for farmers.

With the **Federal Election** we managed to get our lobbied election package which included \$10 million energy grants, \$500k to Dairy Australia to extend financial literacy for farmers, \$150k to ADF to help develop code of conduct, \$300k to explore and develop block chain technology, \$3m to assist farmers in setting up cooperatives and other businesses, \$8.1m into ACCC agricultural unit and also a specialized Dairy specific person to oversee the dairy industry. Something we stated in our submission was that we needed the ACCC to act as the policeman on the beat, not the ambulance at the bottom of the cliff. ACCC has expanded on this further by setting up a dairy specific committee to oversight the code of conduct implementation.

On top of this a **Drought relief package** has been rolled out including \$2m interest free loan for 3 years, 100 GL water buy back scheme for fodder, \$15m for schools and families, \$180m into councils, \$138 into road infrastructure, \$200m into community projects, \$100k for families over 3 years for farm hold allowance packages, and a \$4B fund which Australian Government can access the interest.

The reason for explanation of above is that we do communicate with **Minister McKenzie's** office, we also work with ADF and PPSA on advocacy matters and explain exactly what farmers are going through in these tough times and also what opportunities there are, sometimes you come out of these meetings and think did we get through, though when you see some of the packages come through it does give you comfort that you are being heard, all the while acknowledging what Government can and can't do.

**Dollar Milk** was great to see the back of, took a lot of work over years to get a result. After a tele conference with Woolworths with all States they were the first to lift, which was a big call as they look at the whole trolley of groceries they could lose if people don't want to pay the extra 10c for milk, Coles & Aldi took a bit more to convince though after they were made aware of a media campaign targeting their lack of empathy they soon changed their mind. Must be stated ADF had a big contribution along with our other state organisation

**Trespass** has been an emotional issue for a lot of farmers, great to see all states working through, our peak body ADF were able to get sentences increased and make sure there was a conviction which will impact criminal's ability to travel. Farm Maps lost their non charity status by encouraging people to break the law and their CEO fired from her role. How you measure this outcome I am not sure, other than farmers knowing we won't stand for that sort of behaviour.

**Mandatory Code of Conduct** has taken a lot of consultation from all states to make sure all concerns addressed and have managed to come to a consensus of what all believe needs to be in the code. Politicians have used this as a bit of a football but we assure you all states have come to an agreement and ACCC will oversee.

**Dairy plan** was the chance for all farmers to have their say about the industry and managed to come to a consensus of the key points farmers believe industry needs to address, which will come out for consultation. Great to see the turn out of SA Farmers who were very measured and forward thinking.

**Murray Darling Basin** has taken a lot of working through. Our main concern if they revisit the plan farmers could be a lot worse off. Warren Jacobs, Andrew Curtis and Michel Conner went to Northern Victoria to get first-hand the concerns of farmers in that region and found most farmers were keen on getting outcomes that will benefit all on the river as well as environment.

**SA Action plan** has been developing nicely with the dairy summit in November being a great success. Was great to be in a room with all industry concentrating on what opportunities are out there for SA, positivity and willingness to grow was the key things I took away as well as processors and farmers working together for mutual benefit.

Our relationship with DA, ADF & DSA continues to grow with a common theme that we will do what we can to make sure our farmers businesses can benefit by the work we put in.

Congratulations must go to **Rick Gladigau** for being elected onto the ADF board, Rick has a wealth of experience but more importantly a clear vision for our industry which he states "need us all to unite and work as a team to get the outcomes required".

Also **thanks to our team** in the SADA offices, we are very fortunate to have Andrew Curtis, John Elferink and now Ash Pulford on board who have the same passion for the dairy industry as we do as farmers. Please feel free to call into our office for a chat, Alison, Kelly or Jo will welcome you with a coffee and steer you in the right direction, Alyssa will help you with numbers or just about anything. Our office has a great environment and are all there to make sure we provide strong leadership and effective advocacy enabling a growing profitable sustainable industry for our members and future members.

I hope that you all had a Merry Christmas and I wish you all the best for the new year.

# The whole Milk and nothing but the milk . . .



## New Dairy Code of Conduct is Law

A 'Historic Day' as the Mandatory Code is released to benefit dairy farmers.

The final version of the Dairy Code of Conduct has been released by the Federal Government months ahead of schedule. The announcement by the Federal Agricultural Minister Bridget McKenzie was to help "level the playing field".

Its implementation is based on recommendations to the ACCC which found that in 2018 especially, significant and "unacceptable" imbalances in power ran throughout the supply chain.

The code will operate to govern the relationship between the milk processors and the dairy farmers, as processors will now be required to tell farmers how much they are going to be paid over the time frame of their contracts.

**The code will come into effect from 1 January 2020.**

A huge win for the farmer is the banning of retrospective step-downs as well as the banning of prospective step-down except for in exceptional circumstances.

The ACCC has updated and improved its dispute resolution process and will now have the power to issue fines to processors if the code is breached.

Australian Dairy Farmers CEO David Inall said; "Farmers really want to know someone has got their back. They want to know there is somewhere to go if there is a problem. They didn't previously have that overseeing cop and [now] there is."

For more information on the Mandatory Dairy Code of Conduct, or if you have any questions, don't hesitate to call SADA or John and they'll be happy to help.



## SA farmer elected to ADF board.

South Australian dairy farmer Rick Gladigau was elected to the Australian Dairy Farmers board.

Mr Gladigau, from Mt Torrens, was elected to the five-member board for a three-year term.

He joins Victorian dairy farmers Terry Richardson and John Verstedden, former Fonterra executive and Tasmanian dairy farm owner Bruce Donnison and independent director Victoria Taylor, who was re-elected on Thursday for a two-year term.

Mr Gladigau has been a board member of state dairy farmer

organisation South Australian Dairyfarmers Association since 2007 and is the organisation's treasurer.

He also sits on the National Farmers' Federation's trade committee and the ADF markets, trade and value chain policy advisory group.

Mr Gladigau was a SA representative on the Dairy Farmers Co-operative Board from 2013-2016 and was chair of the company's milk pricing committee during his tenure.

He told [Stock Journal](#) in his time in the dairy industry there had been many changes.

"My Dad always said to me, 'there's no point in whinging about things if you're not willing to be involved and make a difference' and that's why I nominated for this position," he said.

It was important to be part of the national policy leadership in the dairy industry.

"Dairy has certainly gone through a tough time, but I feel it is coming out the other side," he said.

"Strength in policy and direction is what we need as a business and we have one go with the Australian Dairy Plan, I see that as the base to grow the industry."

# South Australian Dairy Summit Wrap Up

In November 2019, Innovative Influences facilitated the Dairy Industry Summit initiated by South Australian Dairyfarmers Association in collaboration with PIRSA and DTTI. The purpose of the summit was to seek direction from the industry on how to achieve the aims of the South Australian Dairy Industry Action Plan and increase growth in the Dairy Sector across the supply chain in support of the Government's Growth State initiative.

Specifically, the Summit sought to deliver the following outcomes.

- Identification of blockages, barriers and limiting factors across the supply chain
- Identification of actions to overcome blockages, barriers and limiting factors
- Clarity around which initiatives are most impactful
- Identification of lead organisation for actions
- Determination of next steps and accountability.

The South Australian dairy industry is one of South Australia's major agricultural industries. Dairy products are sold locally in South Australia as well as interstate and exported overseas. Dairy is now Australia's third largest agricultural industry, with South Australia producing nearly 10% of Australia's total production. Compared to the national averages South Australia has outperformed all other states in its production including the fat and protein delivered. South Australia's dairy industry consistently produces product which is demonstrably of a higher standard than the rest of the country. The Dairy Action Plan identifies the

following areas of focus and key objectives for 2019-2024.

- The development of the South Australian product as a premium product.
- A strong focus on the export market dovetailing on Australia's excellent reputation as the best clean green natural supplier of dairy products, while positioning South Australia as being recognised as the best of that best.
- Demonstrating that South Australia has the highest animal welfare standards. Improved communication across the supply chain.
- Working with the strategic direction of South Australia as a jurisdiction.
- The dairy industry takes a more aggressive posture in dairy related issues.
- Development of training models and succession plans for the future of the industry.
- Promoting the industry as an industry with prospects.

The State Government is implementing Growth State: its plan for prosperity, which outlines four key enablers to grow the state's competitiveness and attract investment. PIRSA has subsequently developed its Corporate Plan with these four enablers in mind and which highlights eight priority areas for action. In 2019, the South Australian Dairy Industry developed its Action Plan. The Action Plan is a vehicle by which all parts of the industry supply chain can see what they can do to improve the image and the performance of the dairy product in the journey from the paddock to the plate.

# Trust in Ag Workshop Wrap up



With 16 attendees across our network attending this informative and engaging workshop, the state now has a group of well resourced individuals better equipped to fill the decreasing gap between city and country. Better focused on

giving people in agriculture the skills, knowledge and confidence to engage with people outside of our industry. This training has been brought to Australia by 2019 SA AgriFutures Rural Women's Award winner Deanna Lush as part of her

project to establish a network of 'trust in ag' champions in SA.

After a day of developing trust, we shared a drink with some 50 plus influential people within our state, Agriculture Minister Whetstone among them.



## Dairy outlook brings mixed picture as domestic value rises



This article is from the January 21 issue of The Advertiser Digital Edition. To subscribe, visit <https://www.adelaidenow.com.au/>. PAULA THOMPSON

THE prices farmers are receiving for their milk have hit their highest level in six years, according to a new NAB report, but profitability is still an issue, with the rising returns not enough to offset skyrocketing input costs.

NAB's Dairy in Focus report details that while the milk price is at levels not seen since 2013-14, key differences between now and then have placed the sector in a very changed position.

NAB agribusiness economist Phin Ziebell said much higher feed and water costs were key factors.

"Both Fonterra and Saputo have stepped-up to \$6.95/kgms (milk solids), but input costs remain high and are only exacerbated by tough seasonal conditions," Mr Ziebell said.

"NAB's feed grain price index for the season to date is at \$316/t, which is roughly 23 per cent higher than it was in 2013-14. With

very low yields this season, we don't foresee much downside here until a decent seasonal break arrives."

SA Dairyfarmers Association president John Hunt said recovery for the sector will be a long-term task, after years of low milk prices coupled with rising costs.

"Across the last five years, most costs have risen by 25 per cent, at least," he said.

"Labour costs in particular have risen dramatically. If you want to get a service provider, such as a mechanic, out to your farm, it's likely to cost \$100 an hour. If you go back five years ago, the cost would have been closer to \$60 an hour."

Mr Hunt said dairy farmers were also bracing for a major rise in hay prices this season, with significant volumes going into bush-fire and drought affected areas.

"The price of fodder is going to skyrocket this year, so most people are trying to secure their supplies now," he said.

Mr Ziebell said global dairy demand growth has been supportive of prices and NAB anticipates Chinese demand growth to continue.

Milk production for major international producers remains positive, although growth is slower than some had anticipated.

"EU28 milk production is running at the top of its five year range, as is the United States," Mr Ziebell said.

"New Zealand's production is slightly down compared to levels a year ago, but volume risk is very low with production having increased significantly over time. NZ produced 71 per cent more milk in 2018 than in 2000."

Australian milk production fell to just under 8.8 billion litres in 2018-19, the lowest since 1995-96.

## SADA visit to World Export Trade Fair

# SADA Fresh

SADA Fresh continues in its efforts to expand the SADA Fresh brand internationally. Recently John Elferink attended a trade show in Shanghai in an effort to sell more SADA Fresh milk. Selling milk in China is always challenging as the price on the shelf turns out to be \$12 per litre. Nevertheless, we still sell between 3,500 and 5,000 litres into the Chinese market per week. Naturally SADA Fresh wants to expand into the market place even further and that means being there and promoting the milk product. SADA wants to grow and capture more of the premium market.



The China International Import Expo (CIIE) trade show in China was something to behold. It was not open to the public but nevertheless, 600,000 traders, vendors and other participants were there and the show was opened by China's leader Xi Jinping, so it was a big deal. While General Secretary Xi didn't actually visit the SADA Fresh stand there was still interest from many other Chinese potential purchasers and SADA Fresh is currently following up contacts made in China to expand the SADA Fresh footprint. *Fingers crossed.*



## Farmers call for probe into water market

### Need insurance? You need WFI.

Proud insurance partner of South Australian Dairyfarmers Association.



At WFI, we take the time to thoroughly understand your business and how it operates. Because when we get to know a business, we can protect everything that matters.

We're available to meet with you face-to-face to discuss your insurance requirements. That's just one of the reasons why we're good people to know for insurance.

#### Need an insurance quote?

Call your local WFI Area Manager on 1300 934 934 or visit [wfi.com.au](http://wfi.com.au)

WFI Rural Plan consists of a range of different policies, covering a wide variety of risks. This approach gives you greater flexibility, and if circumstances change it is easy for you to add another policy.

WFI Rural Plan policies you can choose from:

- Farm Property Damage
- Farm Loss of Income
- Farm General Property
- Farm Transit
- Farm Legal Liability
- Farm Machinery Breakdown
- Farm Electronic Equipment
- Farm Burglary and Theft
- Motor Vehicle
- Personal Legal Liability
- Domestic Workers (WA only)
- Classic Home
- Standard Home
- Personal Valuables
- Pleasure Boat
- Personal Accident and Illness



backed by IAG

Insurance Australia Limited ABN 11 000 016 722 AFSL 227681 trading as WFI is the issuer of our policies. This flyer doesn't take into account your objectives, financial situation and needs. You should consider these matters and the relevant Product Disclosure Statement (PDS) before you act on any advice. You can get a copy of our PDSs from our website at [www.wfi.com.au](http://www.wfi.com.au) or by calling 1300 934 934. Under the Privacy Act we are required to make you aware of how we will collect and use the personal information that you provide to us. This information is contained in our privacy statement which is available online at [www.wfi.com.au](http://www.wfi.com.au) or by contacting WFI on 1300 934 934 or emailing [privacy@wfi.com.au](mailto:privacy@wfi.com.au). South Australian Dairyfarmers Association is an Alliance partner of WFI. If you take out a policy with WFI, South Australian Dairyfarmers Association receives a commission from WFI at 7.5% of the value of the premium payment (excluding taxes and charges).

## South Australian Dairyfarmers' Association Annual General Meeting

[Download Annual Report here.](#)

The SADA AGM was held on 13 November before the Trust in Ag Workshop, where the President presented the Annual Report and Financial statements for the 2019/20FY.

Mr John Hunt was re-elected as President with Nick Brokenshire as Vice President and Rick Gladigau as Treasurer. Sharon Joppich as our south east representative and Ben McHugh for central. Leaving a vacancy for the South East area. If joining a board is something that you've thought about, please get in contact with the President or the office for more information. Joining a board can be a very rewarding job with great benefits to gain from the industry while making positive effects for yourself and everyone in the dairy industry.

## Dairy numbers drop across SA

AS MANY as 5 per cent of the state's dairy businesses have left the industry in recent months, with Dairysafe reporting 220 registered dairies.

In April, this was as high as 233 - an increase on the 2018 figures, with two old cow dairies recommissioned. There are 212 cow dairies, five goat, two sheep and one buffalo dairy.

SA Dairyfarmers' Association president John Hunt said he was aware of some dairies, in the South East, being transformed into beef operations.



Mr Hunt said there were a combination of reasons why dairy farmers might be leaving the industry, including poor returns and increased input costs, but for some it might have simply been the right time to step back.

"The dairy industry of the past four or five years has not been much fun so this is a good time to assess," he said. "The interest in land is giving people an exit opportunity."

He said milk prices had increased in recent months, on the back of strong demand. Mr Hunt said this did raise questions about how sustainable these prices were but in the interim provided a "bit more optimistic frame of mind".



## FARM TRESPASS – ANIMAL ACTIVISTS

Livestock businesses and processing facilities may be targeted by animal activist groups. Unauthorised entry to your property can create a risk of personal injury, property damage, harm to livestock, loss of production or biosecurity breaches.

### How to protect your property

- Restrict access points - fit gates and keep them secure.
- Lock all buildings and vehicles.
- Install a CCTV surveillance system.
- Display clear signage identifying no unauthorised access, any workplace safety requirements or biosecurity issues.
- Photograph and date-log all advisory signage to assist any police investigations.
- Display your RMB number and business name clearly for emergency services.
- Report to police any suspicious activity, unfamiliar vehicles, persons or drones being flown.

### If a trespass occurs

Livestock businesses are often family operated and animal activist trespassing can make you feel vulnerable, fearful and angry. This can lead to confrontations between parties. If you find yourself in this situation, it is important to act rationally, and focus on remaining calm and keeping yourself and your employees safe. Your priority is to avoid confrontation, be sensible, and manage the situation safely.

Emergency police assistance: Call Triple Zero (000)

Non-urgent police assistance: Call 131 444

Please advise police to record your report as suspected animal activism.

### How to manage the situation

Only owners/managers/supervisors should engage with trespassers. All other staff should be requested not to engage with them.

- Use consistent, clear and calm communication.
- Explain they are compromising biosecurity, their own safety and the well-being of livestock.
- Tell them they are trespassing and ask them to leave.
- Tell them that the police have been contacted.
- Do not threaten harm.

**If you do not feel confident telling them they are trespassing and requesting they leave, refer this to the police.**

More information about rural and farm security is available at [www.police.sa.gov.au/safety-and-security-tips](http://www.police.sa.gov.au/safety-and-security-tips)

## FARM SECURITY



# 20 20

# DairySA Central Conference

CHATEAU TANUNDA, BAROSSA VALLEY

Thursday, March 5, 2020 9.30am



“bold ideas”

## REGISTRATIONS NOW OPEN

Head to Eventbrite at <https://2020dsacc.eventbrite.com.au/>

### 9.30am Registrations & Morning Tea

Today is an opportunity to work 'on your business' not 'in your business'!

### Welcome

Emcee: Sarah Thompson

### DairySA Update - Michael Connor DairySA

"Update on the activities of DairySA"

### Michael Harvey Senior Analyst - Dairy, Rabobank

"What's on the horizon? Dairy Industry Update and Outlook"

### Dr Michael Campbell Researcher, Charles Sturt University

"Dairy Beef and its place in the Australian consumer marketplace & beyond"

### Sara Westberry Genetic Services Leader, ST Genetics, USA

"Create the Future: Chromosomal Mating and Sexed Semen"

### Dr Sarah Bolton, Veterinarian & Project Officer - Animal Health & Welfare, Dairy Australia, Nuffield Scholar

"Preserving trust and creating value; the future of non-replacement calf management"

### Deanna Lush, Managing Director, Ag Communicators

"Farmers Driving Industry Culture - Internally and Externally"

### Glenys Zucco, Communications Strategy Manager, Dairy Australia

"Why Dairy Matters: staying ahead of the game"

### Quentin Moxey, Managing Director, Moxey Farms, Australian Fresh Milk Holdings

"From little things, big things grow - the Moxey Family Farms story"

### Warren Davies, Founder, The Unbreakable Farmer

"The three keys: Resilience, Persistence and Determination - lessons from a difficult journey"

### Panel Discussion Selected speakers

Unpack the day's topics through discussions with speakers in a panel setting.

### That's a Wrap!

MC Sarah Thompson will summarise the insights and learnings from the day's presentations.

### 5.30pm 'Gather and Graze'

Discuss the day's events with a light graze & drinks.

### 7.00pm 2020 DairySA Central Conference Dinner Chateau Tanunda, Barossa Valley

Enjoy the company of others with a two course dinner - relax, have fun and unwind.

#### THE 2020 DAIRYSA CENTRAL CONFERENCE IS PROUDLY SUPPORTED BY:

**Major:** Beston Global Food Company, **Industry:** Dairy Australia, **Morning Session:** Saputo Dairy Australia, **Afternoon Session:** Ahrens Group Ltd Pty, **Closing Session:** TBA **Lunch:** De.mem, **Satchel:** Lactalis, **'Gather & Graze' Pre Dinner:** TBA **Dinner:** Total Result Ag Consulting, **Media:** Australian Dairyfarmer magazine, **Inside Trade Display:** Coopers Animal Health, DeLaval, Genetics Australia, Livestock Improvement (LIC), Nufarm Australia, Peats Soil & Garden Supply, Pioneer Seeds, Rabobank, TAFESA, Terragen Biotech, Topcon Agriculture **Supporter:** Hills Farm Supplies, National Herd Development, Production Animal Health Centre University of Adelaide.

**Sponsors are still being accepted** To find out how you can get involved, contact the DairySA Central Conference Sponsorship Coordinator Kylie Boston on 0407 231 547.



SA Dairyfarmers' Association Inc  
 Unit 5, 780 South Road, Glandore SA 5037  
 P: 8293 2399 E: [sada@sada.asn.au](mailto:sada@sada.asn.au)  
[www.sada.asn.au](http://www.sada.asn.au)  
 Or find us on Facebook

February 2020

## SA Dairy Industry Action Plan Leading the Nation

SADA's Dairy Industry Action Plan 2019 - 2024 is already complete and is being rolled out, having been launched over six months ago. This led to the South Australian Dairy Summit in November 2019 and subsequent meetings have been held with both government, SADA and the DIAA (SA Branch) to support the roll out of the industry wide plan.

The DIAA SA Branch is currently reviewing its demand expectations with a view to forewarning three years in advance the expected extra demand for milk over the next three years. DIAA (SA Branch) will finalise a future milk litre requirement number. Although still waiting for an exact figure and confirmation from 2 more processors, the future is looking very promising.



SADA has also been in communication with Dairy SA as they work to provide more education courses to farmers and introduce new courses over the next months. This includes the possibility of courses around sustainability and resource efficiency. Another section of the action plan is to generate and create a skilled workforce that can continue the industry into the future.

We will be working with TAFE SA, Department of Education and Skilling SA along with processors into the possible development of an education facility in the state.

SADA is currently working on a communications strategy as part of the plan roll out.

## The Mandatory Code Becomes Law

As at the 1st of January this year the Mandatory Dairy Industry Code has become law to benefit dairy farmers.

The final version of the Dairy Code of Conduct was released in mid-December and was universally welcomed by all state dairy farming organisations. When announced by the then Federal Agricultural Minister Bridget McKenzie to help "level the playing field", it was a response to the controversy surrounding the conduct of supermarkets and processors toward farmers.

Its implementation has been based on recommendations to the Australian Consumer and Competition Commission (ACCC) which found that in 2018 especially, significant and "unacceptable" imbalances in power ran throughout the supply chain.

The code will operate to govern the relationship between the milk processors and the dairy farmers, as processors will now be required to tell farmers how much they are going to be paid over the time frame of their contracts and post their standard form contracts on the internet. Moreover, all processors must make their prices public by the **1st of June each year**.



A huge win for the farmer is the banning of retrospective step-downs as well as the banning of prospective step-downs except for in exceptional circumstances. The exceptional circumstances provisions are extremely restrictive on processors. Moreover, if a processor seeks to engage a prospective step down it empowers the farmer to terminate the contract without penalty.

The ACCC has updated and improved its dispute resolution process and will now have the power to issue fines to processors if the code is breached.

The South Australian Dairyfarmers' Association has welcomed the new code and has made substantial contributions to its substance.

For more information on the Mandatory Dairy Code of Conduct, or if you have any questions about supply contracts, don't hesitate to call SADA and we'll be happy to help.

# \$75,000 Bushfire Farm Assistance Available through PIRSA

South Australian primary producers in bushfire-affected regions can now apply for grants of up to \$75,000 to help rebuilding and recovery efforts.

Guidelines outlining eligibility criteria and application details are now available online or in person at the local recovery centres established at Lobethal in the Adelaide Hills and Parndana on Kangaroo Island.

The Commonwealth Government has provided the states with the money to administer the grants indicated the grants would provide primary production businesses hit hard by recent fires with the support they needed to rebuild.

The impact from these fires has been widespread across our primary industries and it's clear these rural businesses will need our continued support to rebuild. The grants of up to \$75,000 per producer are intended to help businesses to access farming essentials, while also supporting clean up and rebuilding activities and other vital measures to get agricultural operations back up and running as soon as possible.

The program is uncapped so if demand tips the initial \$100 million in emergency bushfire funding committed, the Commonwealth has indicated that it will work with state governments to ensure money will continue to flow.

Grant applications are open to primary producers in the local government areas of; Adelaide Hills, Kangaroo Island, Murray Bridge, Mount Barker, Mid Murray, Yorke Peninsula and Kingston.

South Australian Minister for Primary Industries and Regional Development Tim Whetstone urged producers impacted by the fires to apply.

"Our primary industries are the backbone of regional South Australia and we will do everything we can to help these businesses and the communities

that depend on them to recover from these devastating bushfires," said Minister Whetstone.

In recent meetings with PIRSA, SADA indicated its concern that the applications forms were onerous in nature and intrusive in the amount of access that was to be given to Government to the records of farm businesses. The eight-page application asks for permission for public servants to access a number of records regarding businesses private in formation.

PIRSA indicated that the forms were an effective *fait accompli* as the form had been drafted by the Commonwealth for use by the states. Nevertheless, assurances were given that the information gathered would be used for the purpose of managing the grants exclusively. In short there was a clear indication that the form would remain unchanged and the only comfort given was a promise that the information would be used for the purpose of the application only.

For the grants which have already been issued the approval time has been an average of 1.5 days.

For information on how to apply for the Emergency Bushfire Response in Primary Industries Grants Program in South Australia, download the guidelines and application form from [pir.sa.gov.au/recoverygrants](http://pir.sa.gov.au/recoverygrants), call the Recovery Hotline on 1800 931 314 or visit a local recovery centre.



## In this issue:

- SA Dairy Industry Action Plan
- Mandatory Code
- Bushfire Farm Assistance

- Water Allocations
- National Dairy Plan draft
- Indonesia Free Trade Agreement
- Minister calls for Landscape Nominations
- Recommendations from JTT

# Getting the Measure of Water Allocations

This article has been plagiarised from Andrew Reynolds, Executive Director River Management, Murray–Darling Basin Authority. It amounts to an excellent overview of the operation of the Murray Darling Basin arrangements between the states and is utterly worth reading. In good years, water flowing down the Murray River meets everyone's needs with a bit in reserve. Either side of those years are the floods when there's more than enough water around, or droughts when all water users have to cope with less. That's the nature of the Murray-Darling Basin, extreme variability that is notoriously difficult to predict.

A hundred years ago, Victoria, NSW and South Australia negotiated a way to manage the variability together, by giving each state a share of water that would support towns to grow and industries to develop. Today the effect of a variable climate has been smoothed with the Hume and Dartmouth dams, which collect and store water from both the NSW and Victorian side of the high country. It has been smoothed by modifications to store water at the Menindee Lakes on the Darling River and at Lake Victoria in the mid-Murray. Combined with major weirs, canals and pipelines built over the century, these works allow governments to determine how much, when, for how long and to whom the Murray's water flows.

## Managing the three-way split

A key part of the Murray-Darling Basin Authority's responsibility is to determine and regularly update how much of the total water in the Murray system belongs to each state. Working out the volume of water that can be shared means calculating how much has to be set aside first to meet the future needs of the system, such as critical human water needs, a reserve to cover evaporation losses and flows to physically deliver water throughout the system. The water remaining can then be shared between NSW and Victoria, who in turn provide equally for South Australia's share as agreed in the Murray-Darling Basin Agreement. That doesn't mean the water in the Murray system is split into three equal shares. Water resources in Hume and Dartmouth dams are divided 50-50 between NSW and Victoria, as are Menindee Lakes when they hold more than 480 gigalitres (any less and the water is controlled by NSW alone). Flows from the rivers that feed the Murray downstream of Albury, however, such as the Murrumbidgee and the Goulburn, are owned by their respective state. That means the volume of River Murray water available to Victoria usually exceeds that of NSW, by virtue of the states' different rainfall and river networks. Over the long-term, Victorian tributaries (3317 gigalitres) on average deliver to the Murray more than

double that of the NSW tributaries (1543 gigalitres).

Since June 1 this year, the difference is fourfold. Victoria's tributaries have delivered 700 gigalitres of water compared with 176 gigalitres in NSW. South Australia's total share is delivered according to a monthly schedule that adds up to 1850 gigalitres a year. As a result South Australia's share of water is potentially less than that of the other states, however it is a reliable quantum. In effect South Australia's system prioritises reliability of supply during times of low water availability, as is the case now, over receiving high volumes when water is plentiful.

## Allocating the resource

Once a state knows how much water it has, it can allocate the water among those who have a licence to use it. The volume of available water at the start of the water year can and does change as the year progresses, usually as a result of rain boosting the storage levels. Each state has developed its own set of licences and rules around how to allocate the state's share of water to their licence holders. This means allocations in one state will be different those in another.

## In some years that difference can be significant.

This is one such year—the licences of many growers in NSW have not yet had any water allocated by their government, while Victorian licence holders for the large part have received reasonable allocations and the South Australian government has allocated 100 per cent to entitlements.

## Planning ahead for all scenarios

Regardless of the state, licence holders also have the facility of carrying allocated water into the following year as their own buffer against drought. A great deal of the water in the dams and flowing in the river at the moment has been carried over by licence holders from last year. This is a choice available to those with an allocation this year. There's no right or wrong about how water is allocated. Each state's system of distributing the resource has evolved around the needs of its communities and supported an incredible growth in diversity and value in food and fibre production. It is a challenge to manage in times of drought – no matter how carefully the system is managed we can never drought proof a climate like ours. Rain is needed to provide surety to all water users. Everyone who uses water can be planning ahead for all scenarios, including the possibility that allocations do not improve and conditions stay dry.

# National Dairy Plan Draft out for comment

Following in the footsteps of SADA which had developed its own Dairy Industry Action Plan 2019-2024 Dairy Australia has embarked on the development of a national Dairy Action Plan. The Draft Plan can be found at <https://www.dairyplan.com.au/key-documents>

Dairy Australia begins by observing that dairy makes a crucial contribution to the Australian economy, and particularly to our regions. Our industry is one of the few remaining major manufacturing industries in Australia, and makes a vital contribution to the economy and rural and regional employment.

Dairy's impact in regional Australia is enhanced by the fact that the processing of dairy products is predominantly regionally-based. In recent years, rising input costs combined with unprecedented volatility has undermined profitability.

Since the early 2000s the cost of production, from higher feed and labour costs, has outpaced the increases in milk price and put significant pressure on farm profit margins. The impact on profitability has been compounded by increases in market and climate volatility, while confidence has been shaken by \$1/litre milk and the 2016 milk price step downs. Dairy Australia argues that it is time to turn this around and return the dairy industry to profitable growth. They correctly observe that the good news is that this is not a demand problem - the demand for dairy products both in the domestic market and in export markets remains strong, while the investment climate is encouraging. The plan will be developed reflecting five areas of commitment.

## SADA welcomes Indonesia Free -Trade Agreement

SADA has welcomed the free trade agreement announced between Australia and Indonesia.

The Indonesia Australia – Comprehensive Economic Partnership Agreement (IA-CEPA) will open the door for Australian Dairy exporters to Indonesia wider than the existing ASEAN-Australia-New Zealand Free Trade Agreement (AANZFTA) has allowed up until now.

Indonesia is Australia's third largest dairy export market and in 2018-19 Australia exported over 56,000 tonnes of dairy product to that market valued at over \$192 million that year.

IA-CEPA will eliminate the remaining existing tariffs on dairy products immediately or in the near future. Notably, the Australian Dairy Industry Council (ADIC) has estimated that the annual value chain savings through dairy tariff elimination will be in excess of \$6 million per annum, which the dairy industry translated into 15–20 more direct jobs.

Indonesia is a nation of more than 260,000,000 people which represents a massive market into which to export, 90% of whom are Muslim.

Milk and cheese products are generally easy products to receive halal certification and therefore offers a market on Australia's doorstep.

SADA has developed a South Australian Dairy Industry Action Plan which is export focused for premium product and the ratification of this FTA represents a splendid alignment of intent between the SA dairy industry

and Indonesia's government.

The SA industry action plan is supported by the South Australian Government and many dairy processors in South Australia including the Dairy Industry Association of Australia (SA Branch).

The opening up of these markets even further in an environment which has a growing middle class is just gold.

Many Australians don't realise that Indonesia at its closest, is just 400km from Australia's mainland, placing that nation on Australia's doorstep.

The potential of this agreement is difficult to overstate for most industries and the dairy industry is no exception.



# Minister calls for Landscape Nominations

Since the last state election the Marshall Government has been reforming natural resources management policies and establishing new Landscape South Australia boards under recently passed legislation the *Landscape South Australia Act 2019*. This new legislation has restructured the way for how South Australian landscapes will be managed moving forward. The emphasis has been on putting community at the heart of regional decision making.

For more information the government's document summary can be located at:

<https://d3u55zae1ecw4x.cloudfront.net/lbsa/docs/Landscape-SA-Summary.pdf>

The Minister for the Environment, David Speirs, has recently appointed eight regional landscape board Presiding Members. These individuals have been drawn from their communities and chosen by the Minister who has chosen the chairs based on their strong connections with regional communities and significant industry knowledge and experience in the management of South Australia's state's landscapes.

Following their appointments the Minister has now opened nominations for board members for the Landscape South Australia Boards.

The Government is looking for people who they describe as

"committed with a passion for their community and their natural landscapes". If you're interested the Minister invites you to become part of this reform to work for South Australia's landscapes so they are climate resilient, productive and sustainable.

If you want to be influential in bringing about change in the way natural resources and the environment underpin your community, lifestyle and farming industries – the South Australian Government wants you to hear from you.

Applications are open until 6 March 2020, for more information and to apply visit [landscape.sa.gov.au](http://landscape.sa.gov.au).



## Recommendations from the Joint Transition Team (JTT)

The (JTT) was formed in late September 2019 by the Australian Dairy Plan Committee (comprised of the Chairs of the four current peak organisations – Australian Dairy Farmers, Dairy Australia, Australian Dairy Products Federation and Gardiner Foundation – with Hon. John Brumby as the Independent Chair). The JTT was created to develop options and a recommendation for a new, transformative structure for the national industry. The decision to form the JTT was an action from the Australian Dairy Plan, which involved extensive consultation with over 1,500 industry participants from across the entire dairy supply chain. It is an industry-driven and owned initiative.

The report presented the findings and a recommendation for a new national organisation to provide leadership and services for the Australian dairy industry. It was prepared by the JTT in response to stressors the industry has been under in recent years and called for transformational change.

The report proposed three strategic choices. It recommended a new model to deliver integrated national industry services that will re-position the industry to be more viable and valued by dairy businesses, governments and the community.

The report did not attempt to answer every issue and provide a lot of detail.

If there is a mandate from dairy businesses to establish the model recommended, the implementation process can then begin and the details can be mapped out.

The JTT argued that dairy businesses know that the operating environment has changed dramatically for our industry in the past two decades. The JTT asserted that the current model is no longer fit for purpose and argued that it is time to move on from the industry institutions that helped us succeed in the past. They suggested to create a new model which would meet the needs of dairy businesses from across the value chain.

The JTT has approached its work with an emphasis on defining a new model that would perform and create significant value for dairy businesses along the entire supply chain. Three models were considered and one recommended which the JTT called NewCo B.

Features of NewCo B would be established as a fundamentally new business model.

## Farmers call for probe into water market

### Need insurance? You need WFI.

Proud insurance partner of South Australian Dairyfarmers Association.



At WFI, we take the time to thoroughly understand your business and how it operates. Because when we get to know a business, we can protect everything that matters.

We're available to meet with you face-to-face to discuss your insurance requirements. That's just one of the reasons why we're good people to know for insurance.

#### Need an insurance quote?

Call your local WFI Area Manager on 1300 934 934 or visit [wfi.com.au](http://wfi.com.au)

WFI Rural Plan consists of a range of different policies, covering a wide variety of risks. This approach gives you greater flexibility, and if circumstances change it is easy for you to add another policy.

WFI Rural Plan policies you can choose from:

- Farm Property Damage
- Farm Loss of Income
- Farm General Property
- Farm Transit
- Farm Legal Liability
- Farm Machinery Breakdown
- Farm Electronic Equipment
- Farm Burglary and Theft
- Motor Vehicle
- Personal Legal Liability
- Domestic Workers (WA only)
- Classic Home
- Standard Home
- Personal Valuables
- Pleasure Boat
- Personal Accident and Illness



## Highlights

Andrew met with ADF CEO David Inall to discuss opportunities for 2020 and identify areas where SADA and ADF could collaborate.

Andrew joined a meeting with Federal Agriculture Minister Senator Bridget, Graham, Michele and Craig Hamilton and Member for Barker Tony Pasin to discuss the state of the dairy industry and the benefits of the Mandatory Dairy Code.

Ashleigh continues to progress various aspects of the SA Dairy action plan including the establishment of an innovation centre at Lot 14 (Old RAH site)

John E participated in a dairy discussion group meeting to discuss impact of fire and options for recovery for dairy farmers.

Together with the newly appointed executive officer for the new Sheep and Cattle Industry Fund Boards, Tom Costentino, Andrew met with representatives from PIRSA to discuss arrangements with the changeover in the management of the Sheep and Cattle Industry Funds.

## SADA/Livestock SA continue to partner for bushfire relief.

SADA and Livestock SA continue to partner in assisting with the delivery of hay to Kangaroo Island. Sometimes the help is simply assisting with tarping (as in the case of the picture attached) to other occasions sourcing, transporting, tarping and delivering hay to devastated farmers on Kangaroo Island as well as farmers



in the Adelaide Hills. Livestock SA has indicated its thanks to SADA for SADA's assistance and support in this matter and SADA has indicated it happiness to assist.

As the bushfires have retreated things have settled back down to close to normal and we will continue to assist where required. A special note goes to all members of SADA staff who have not only worked to assist Livestock SA but those staff members have given many hours of their own time to support the effort.



SA Dairyfarmers' Association Inc  
Unit 5, 780 South Road, Glandore SA 5037  
P: 8293 2399 E: [sada@sada.asn.au](mailto:sada@sada.asn.au)  
[www.sada.asn.au](http://www.sada.asn.au)  
Or find us on Facebook

## March 2020 SADA NEWSLETTER

As the world, the country, the state and the industry quite rightly focus on Corona Virus, we are happy to report that there are some other things happening.

Following the SA Dairy Summit in November 2019 a number of actions were identified. Although the Coronavirus pandemic has slowed some of the actions that we were working on, we are able to report the following progress on actions:

### DIAA SA

Over the next 3 years processors will need at least 200 million litres of milk.

We hope this gives hope to farmers to keep in business and that it will strengthen the relationship between farmers and processors.

### EDUCATION

SADA spoke to TAFE SA about the possibility of developing a Certificate III in Food Processing (Dairy Processing). This would be the first of its kind in Australia to focus mainly on dairy processing and would enable graduates of the course to have the necessary skills to enter the workforce (which would save time, money and training on the processors part).

In addition to the dairy processing course we would also like to implement a number of "Dairy Value Adding Courses" focusing on

Cheese Making (already in place), Ice Cream/Gelato Making, Butter Making and Yoghurt Making.

SADA has spoken with Skilling SA as well as Foundation Skills about the possibility of creating "Pre-Apprenticeship Courses" to provide basic skills. These short courses will still have accredited modules (which can then be used as recognition of prior learning if willing to undertake the certificate) but will not take the same time length and study load of the full course. We hope that this makes people more employable in the future.

DairySafe is also looking at education courses (either separate or combined with the processing course). Information is available at [www.dairy-safe.com.au](http://www.dairy-safe.com.au).

### TRACEABILITY

SADA applied for the Department of Agriculture's Traceability Grant Program.

This grant should enable us to improve upon the traceability in the dairy supply chain and build on the 'one step forward, one step back' method currently in place.

This would also introduce quality assurance measures that would have to be compliant with ISO 22005:2007.

We have DIAA and Dairy Safe backing this project proposal.

### Staying Informed and Healthy

As a valued member of ours we hope that you and your business are coping with the strains and uncertainties imposed on you by COVID-19 (coronavirus).

As your respected voice in the Dairy industry we are here to help you. Being part of an Australia-wide family network of dairy farmers means that we have in place contingency plans to ensure that we will be able to meet all your needs without delay.

We are here to help.

The team at SADA.

### In this issue

- COVID19 Update
- Dairy Industry risk
- Australian Dairy Plan

# COVID 19—Australian Dairy Industry Risks

As you're doubtlessly aware the rise of the COVID – 19 Corona Virus has settled upon the world. SADA is actively engaged with state and national bodies representing the interests of South Australian Dairy Farmers. SADA will keep you regularly updated on what is being done in the industry both in the state and in the national domain.

## Closing the Borders

The SA Government has effectively declared the borders to be closed. However, this isn't a complete lockdown. The SA Government has announced that:

- People who typically and regularly move across the border will be permitted to do so
- SAPOL are working on protocols but not expecting these to be a barrier to transport.

This means that food and other essentials, including your milk and dairy products will still be able to cross state borders. Saputo has been one of the processors to confirm that they have enjoyed the same advice in Victoria.

## The national response

SADA is part of the national response. There are some things to know:

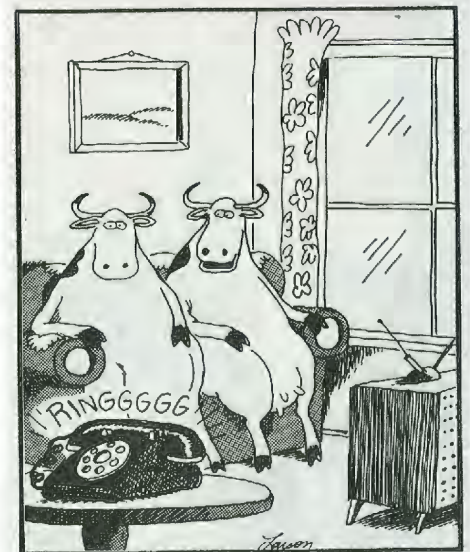
- An industry group has been set up over the last 3 weeks which reports to a National response group made up of ADF, ADPF &

DA, they feed information through the appropriate channels in government and also channel information back to the national and state organisations as necessary. These groups are meeting every 2 days or when required.

- Dairy is part of the food and grocery sector group.
- The Commonwealth Government has indicated that they expect State Governments to advise that Dairy is essential. This extends to service providers including stock transport, stock agents and allied workers.
- As indicated above all providers who normally travel across borders will be allowed to do so.
- All the information required is on the DA website, go to <https://www.dairyaustralia.com.au/news-listing/coronavirus-covid19-farm-business-update?id=37251F5A348F41518200C1675BB6E10F> to stay abreast of current information. This site has a number of useful links.
- Back packers visas have been extended from 6 months to 12 months. While this was a product of the bushfire crisis the intent and scope of the scheme is pertinent to the current crisis.
- Farm fertiliser and other additives which are not produced in Australia have become impacted by the international trade

environment however, supplies are still moving albeit more slowly than historically.

- The total Government stimulus package is \$189 billion over the two announced tranches. This includes business support loans which are being supported by Australia's banks. As information comes to hand regarding these support measures, we will advise members.
- SA Dairy is looking for opportunities in the current environment to support supermarkets and consumers to assist with the supply of milk into the marketplace.
- Different SA processors have indicated different response plans in SA should their staff be impacted. Check with your processor what they are intending to do in the case of a positive test in their factory.



"Well, there it goes again . . . And we just sit here without opposable thumbs."

# Advance Ag – Adopting AgTech

## Advance Ag – Adopting AgTech in South Australia

Written by Ashleigh Pulford—Monday 24 Feb 2020

The event was opened by the Hon Steven Marshall MP, Premier of South Australia who highlighted the importance of using and adopting technology into all aspects of agriculture.

The Keynote Speaker for the event – Dr Astorre Modena – talked about how the adoption of technology in Israel has not only helped make their agriculture more productive, increased the size and variety of exporting material but has helped other sectors such as engineering and health.

Darren Thomas from Thomas Foods International (TFI) gave an insight to the progress of their new meat processing facility using technology. He quoted that “we will be able to process 10 whole carcasses in about a minute” showing the efficiency of technology. He also discussed their implementation of Blockchain traceability systems for all their products, which is similar to what we would like to achieve in the dairy industry. Further he stated that TFI’s main goals were to:

Optimise the supply chain for profitability

Highlight animal welfare standards

Premiumisation of products

The next sessions of the day were small group presentations focusing on three main streams being Farm Management, Remote Sensing and IoT Devices.

I attended the Smart yards and virtual fencing talk presented by Jason Chaffey (CEO Agersens and eShep-

herd). This was quite interesting seeing how audio and pulse technology can be used to fence cattle and herd if they do manage to escape. Unfortunately, due to the animal welfare regulations in SA this technology is not able to be used here at the moment. Hopefully with more field trials and a change in regulation this technology will be able to be implemented.

The water management for livestock session highlighted the use of “Farmbot” in monitoring and managing water movement and levels. This piece of tech provides precise information to farmers about multiple water sources as well as extreme changes so that farmers can move livestock according to water levels.

Another interesting talk was about automatic milking systems through Lely Australia. Joshua Clark, a Dairy Farmer from the South East of SA spoke as a user of this technology in his own herd, highlighting the ease of use and reduced amount of labor that was needed to milk cattle. He also stated that he was expecting an increase in production as cattle were “happier” and could be milked when they were ready to. It would be great to see more of this technology implemented onto farms.

The afternoon session talked about the integration of AgTech in emergency situations. One of the main limiting factors talked about was how to use the tech if they were damaged or lost reception. This would present some real challenges and highlighted the developments that are still required in using tech in agriculture.

The event was closed by the Hon Tim Whetstone MP, Minister for Primary Industries and Regional Development SA who also talked about the importance of AgTech.

Follow this link for video of all sessions, which will be uploaded in due course.

[https://www.pir.sa.gov.au/primary\\_industry/agtech/advance\\_ag](https://www.pir.sa.gov.au/primary_industry/agtech/advance_ag)



royal adelaide  
**SHOW**

## DAIRY CATTLE COMPETITION

There will be five Dairy Cattle breeds judged this year: Ayrshire, Guernsey, Holstein, Jersey and Illawarra. The 2020 Feature Breed is Illawarra.

Register now:

<https://www.theshow.com.au/competitions/livestock/dairy-cattle/>



Farmers call for probe into water market  
**WFI, proud alliance partner of the South Australian Dairyfarmers' Association**



**Insurance Tailored to your farm.**

At WFI, we take the time to thoroughly understand your business and how it operates. Because when we get to know a business, we can protect everything that matters.

We're available to meet with you face-to-face to discuss your insurance requirements. That's just one of the reasons why we're good people to know for insurance.

**Why not call us for a quote?**

With 100 years experience in the insurance business, WFI knows what you're looking for.

**To find out more about WFI's products, or to request a quote, contact your local Area Manager by calling 1300 934 934 or simply visit [wfi.com.au](http://wfi.com.au)**



**1300 934 934**  
**[wfi.com.au](http://wfi.com.au)**



**More Business Links**

Increased Asset Write Off

<https://www.business.gov.au/Risk-management/Emergency-management/Coronavirus-information-and-support-for-business/Instant-Asset-Write-Off>

Backing Business Investment

<https://www.business.gov.au/Risk-management/Emergency-management/Coronavirus-information-and-support-for-business/Backing-Business-Investment-BBI>

Increased and accelerated income support

<https://www.business.gov.au/Risk-management/Emergency-management/Coronavirus-information-and-support-for-business/Increased-and-accelerated-income-support>

SME Guarantee Scheme

<https://www.business.gov.au/Risk-management/Emergency-management/Coronavirus-information-and-support-for-business/Coronavirus-SME-Guarantee-Scheme>

Early Superannuation Access

<https://www.business.gov.au/Risk-management/Emergency-management/Coronavirus-information-and-support-for-business/Early-access-to-superannuation>

**Farwell to The DEVONDALER**

SADA recognises and congratulates the efforts of Saputo Dairy Australia (SPA) for publishing an exemplary communication piece for the past 34 years, that's 396 issues of shared ideas among farmers, employees and those who provided services to the then Murray Goulburn Co-operative.

***This has inspired us to do a little soul searching ourselves?***

What do you want to see in your local monthly newsletter. Answer this quick survey so we can better serve our com-

munity. This should not take any more than a couple of minutes of your time, thanking you all in advance.

<Survey Link>





SA Dairyfarmers' Association Inc  
Unit 5, 780 South Road, Glandore SA 5037  
P: 8293 2399 E: [sada@sada.asn.au](mailto:sada@sada.asn.au)  
[www.sada.asn.au](http://www.sada.asn.au)  
Or find us on Facebook

## SADA NEWSLETTER APRIL 2020

As the world, the country, the state and the industry quite rightly focus on Corona Virus, we are happy to report that there are some other things happening.

Following the SA Dairy Summit in November 2019 a number of actions were identified. Although the Coronavirus pandemic has slowed some of the actions that we were working on, we are able to report the following progress on actions:

### DIAA SA

Over the next 3 years processors will need at least 200 million litres of milk.

We hope this gives hope to farmers to keep in business and that it will strengthen the relationship between farmers and processors.

### EDUCATION

SADA spoke to TAFE SA about the possibility of developing a Certificate III in Food Processing (Dairy Processing). This would be the first of its kind in Australia to focus mainly on dairy processing and would enable graduates of the course to have the necessary skills to enter the workforce (which would save time, money and training on the processors part).

In addition to the dairy processing course we would also like to implement a number of "Dairy Value Adding Courses" focusing on Cheese Making (already in place), Ice Cream/Gelato Making, Butter Making and Yoghurt Making.

SADA has spoken with Skilling SA as well as Foundation Skills about the possibility of creating "Pre-Apprenticeship Courses" to provide

basic skills. These short courses will still have accredited modules (which can then be use as recognition of prior learning if willing to undertake the certificate) but will not take the same time length and study load of the full course. We hope that this makes people more employable in the future.

DairySafe is also looking at education courses (either separate or combined with the processing course). Information is available at [www.dairy-safe.com.au](http://www.dairy-safe.com.au).

### TRACEABILITY

SADA applied for the Department of Agriculture's Traceability Grant Program.

This grant should enable us to improve upon the traceability in the dairy supply chain and build on the 'one step forward, one step back' method currently in place.

This would also introduce quality assurance measures that would have to be compliant with ISO 22005:2007.

We have DIAA and Dairy Safe backing this project proposal.

The team at SADA remain available and here to help.  
8293 2399  
[sada@sada.asn.au](mailto:sada@sada.asn.au)

### Staying Informed and Healthy

As a valued member of ours we hope that you and your business are coping with

the strains and uncertainties imposed on you by COVID-19 (coronavirus).

As your respected voice in the Dairy industry we are here to help you. Being part of an Australia-wide family network of dairy farmers means that we have in place contingency plans to ensure that we will be able to meet all your needs without delay.

### In this issue

- COVID19 Update
- Action Plan Update
- Traceability
- Staying Healthy
- Conditions in the Basin
- Advance Ag
- Dairy Cattle Competition
- Members Survey
- Water Allocations

# Independent Assessment of Social and Economic conditions in the Basin

SADA has made a submission to the Independent Panel of Social and Economic Conditions in the Basin.

SADA expressed its concurrence with the NFF and ADIC submissions to the Panel.

SADA agreed with the Panel's observations that there were unintended consequences of the Murray Darling Basin (MDB) plan which had affected regions unequally, particularly to the detriment of the Goulburn Murray Irrigation Districts (GMID) and the Barmah Choke. As the Panel has indicated in this region the impacts have been exacerbated by, firstly the unbundling of water, and secondly, uneven commodity prices which encouraged buybacks in the MDB plan and recent drought, adding to the price of water.

However, in the Panel's review, on-farm efficiency projects were given credit early but then largely discredited later in the discussion paper.

SADA believes there should be a section in the review that highlights the benefits of these projects not least of which is a statement acknowledging that the efficiency gains thus far, have in many instances, resulted in increased productivity and profitability.

SADA believes that if the community aren't appraised of the importance of the 450GL then it is likely they would not be interested in the on-farm efficiency programs, as some water is given to the environment which is perceived, albeit incorrectly, as a loss to agriculture.

At the core of SADA's observations is

that at present the 450 GL will still need to be found and it is at very best a remote possibility that there will be another pathway. If it needs to be found, then on-farm efficiency projects that pass the socio-economic neutrality test will be a vital method for irrigators to find water.

SADA is of the firm opinion that a pathway can be found for the benefit of all participants in the MDB. As the Panel observes, efficiency projects can be of great benefit to the profitability of the irrigators that use them. Opportunities are open to all irrigators and no one need miss out.



Funding for on-farm efficiency projects is vital to the plan. Some will want to join but others will not.

The benefits of the program should be open and assertively promoted to all irrigators in the MDB. This will enable irrigators to determine where these projects, (that pass the socio-economic neutrality test), will fit into their businesses.

Disappointingly, there is a fair amount of pressure in some regions not to participate.

SADA believes these water savings must also be pursued in the form of off-farm efficiencies as an important component of the plan.

Many SA dairy farmers have participated in on-farm efficiency projects over the past years.

Some farmers approached these projects with apprehension at first, but later came on board in second and third rounds. This often occurred after farmers observed neighbouring farms and project outcomes. Initially, having been wary of the outcomes in the first place, the merits of these projects became increasingly irresistible.

These farmers can, and do, vouch for the benefits of these projects to their businesses. Some dairy farmers are

now applying for a third time. Many irrigators in the Riverland region have had similar experiences. As noted from your review they have had benefits throughout the basin.

The difficulty is that at present the 450GL is linked to the 605GL offsets in the Water Act, so if one part is removed it will re-

move the other, reverting back to a 2,750 GL plan.

If the water is then not found, farmers are then confronted with the reality of it being recovered through further buy backs.

Buy backs represent a cheaper way of finding the water, but as outlined in the Panel's review, that leads to unintended and uneven consequences across the regions.

If you wish to see the whole submission please contact John Elferink at [john@sada.asn.au](mailto:john@sada.asn.au) or give John a call on 8293 2399

## Adopting AgTech in SA

The Advance AgTech event was opened by the Hon Steven Marshall MP, Premier of South Australia who highlighted the importance of using and adopting technology into all aspects of agriculture.

The Keynote Speaker for the event – Dr Astorre Modena – talked about how the adoption of technology in Israel has not only helped make their agriculture more productive, increased the size and variety of exporting material but has helped other sectors such as engineering and health.

Darren Thomas from Thomas Foods International (TFI) gave an insight to the progress of their new meat processing facility using technology. He quoted that “we will be able to process 10 whole carcasses in about a minute” showing the efficiency of technology. He also discussed their implementation of Blockchain traceability systems for all their products, which is similar to what we would like to achieve in the dairy industry. Further he stated that TFI’s main goals were to:

- Optimise the supply chain for profitability
- Highlight animal welfare standards
- Premiumisation of products

The next sessions of the day were small group presentations focusing on three main streams being Farm Management, Remote Sensing and IoT Devices.

Ashleigh attended the Smart yards and virtual fencing talk presented by

Jason Chaffey (CEO Agersens and eShepherd). This was quite interesting seeing how audio and pulse technology can be used to fence cattle and herd if they do manage to escape. Unfortunately, due to the animal welfare regulations in SA this technology is not able to be used here at the moment. Hopefully with more field trials and a change in regulation this technology will be able to be implemented.

The water management for livestock session highlighted the use of “Farmbot” in monitoring and managing water movement and levels. This piece of tech provides precise information to farmers about multiple water sources as well as extreme changes so that farmers can move livestock

according to water levels.

Another interesting talk was about automatic milking systems through Lely Australia. Joshua Clark, a Dairy Farmer from the South East of SA spoke as a user of this technology in his own herd, highlighting the ease of use and reduced amount of labor that was needed to milk cattle. He also stated that he was expecting an increase in production as cattle were “happier” and could be milked when they were ready to. It would be great to see more of this technology implemented onto farms.

The afternoon session talked about the integration of AgTech in emergency situations. One of the main limiting factors talked about was how to use the tech if they were damaged or lost reception. This would present some real challenges and highlighted the developments that are still required in using tech in agriculture. The event was closed by the Hon Tim Whetstone MP, Minister for Primary Industries and Regional Development SA who also talked about the importance of AgTech.

Follow this link for video of all sessions, which will be uploaded in due course.

<https://www.youtube.com/playlist?list=PLz96-ojBATRf-5wInXtAJBK0eMIQx4vs>

If you wish to discuss AgTech please give Ash a call at SADA Phone: 8293 2399 or email [Ashleigh@sada.asn.au](mailto:Ashleigh@sada.asn.au)



royal adelaide  
**SHOW**

### DAIRY CATTLE COMPETITION

There will be five Dairy Cattle breeds judged this year:

Ayrshire, Guernsey, Holstein, Jersey and Illawarra.

The 2020 Feature Breed is Illawarra.

Register now:

<https://www.theshow.com.au/competitions/livestock/dairy-cattle/>



**Farmers call for probe into water market**  
**WFI, proud alliance partner of the South Australian Dairyfarmers' Association**



## Around the grounds

- John has been involved in developing a Milk Supply Standard Form Contract with ADF.
- Ash and John have made a round of Check in calls with members to see how we're coping with Covid19.
- Andrew is working with NFF animal welfare policy working group to develop a draft animal welfare policy.

### Insurance Tailored to your farm.

At WFI, we take the time to thoroughly understand your business and how it operates. Because when we get to know a business, we can protect everything that matters.

We're available to meet with you face-to-face to discuss your insurance requirements. That's just one of the reasons why we're good people to know for insurance.

### Why not call us for a quote?

With 100 years experience in the insurance business, WFI knows what you're looking for.

To find out more about WFI's products, or to request a quote, contact your local Area Manager by calling 1300 934 934 or simply visit [wfi.com.au](http://wfi.com.au)



What do you want to see in your local monthly SADA newsletter.

Answer this quick survey so we can better serve our community. This should not take any more than a couple of minutes of your time, thanking you all in advance.

<https://www.surveymonkey.com/r/RJ7BXSL>



**1300 934 934**  
**wfi.com.au**

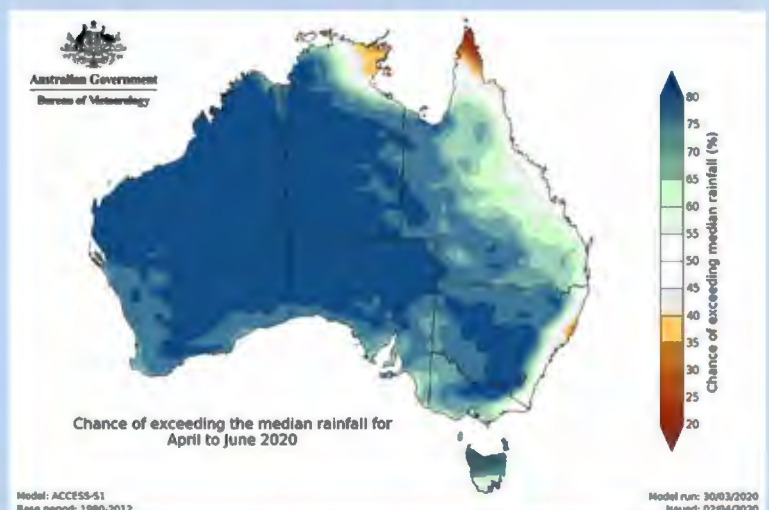


## Water allocations downs and ups.

The amount of water in the dams and reserves across the Murray Darling Basin are less than last year when the opening allocation was 14% of total allocation. In spite of that number most farmers in South Australia went on to enjoy 100% of the allocation by the end of the year

When the 14% allocation was announced last year, the contained capacity was 35% of the dams and reserves. This year the number has contracted to 29% of capacity so it is likely that the opening announcement will be lower.

This means farmers in the basin should not be surprised if the opening allocation is low again this year. However, there is a light at the end of the tunnel and it isn't the train coming the other way. The Australian Bureau of Meteorology has dipped its toe into the deep end of the optimism pool and predicted that there was an increasing change that rainfall would exceed the median in the April to June period. While more pronounced in the western two thirds of the continent the effect also makes its way to the whole continent west of the Great Dividing Range.





SA Dairyfarmers' Association Inc  
Unit 5, 780 South Road, Glandore SA 5037  
P: 8293 2399 E: [sada@sada.asn.au](mailto:sada@sada.asn.au)  
[www.sada.asn.au](http://www.sada.asn.au)  
Or find us on Facebook

## SADA NEWSLETTER MAY 2020

### Keep out: Trespasses will be prosecuted

Protesters who trespass on primary production land will now face tougher penalties under new laws that passed Parliament last month.

Attorney-General, Vickie Chapman said the new laws would significantly increase the penalties for those found trespassing on farming land.

“Our farmers and food producers play a huge role in our economy and it is important there are suitable deterrents in place to protect these family businesses and supply chains,” she said.

“Through these changes, vigilante activists who break into a farm to promote their cause will be held accountable for their actions – this Government will not tolerate disturbing livestock or destroying their property to make a point.”

The new legislation includes the creation of a new, standalone aggravated farm trespass offence.

“Our previous trespassing offences didn’t adequately cover the additional risks associated with livestock and agricultural properties,” Ms Chapman said.

“This new offence acknowledges that individuals trespassing on primary production land and interfering with the conduct of the business, not only put the safety of people at risk, but also increase the risk of possible biosecurity and food contamination.

... To be continued (page 2)

### Website connecting workers to seasonal jobs in SA

Seasonal Jobs SA is a new website launched recently to help source seasonal workers for essential agricultural jobs across South Australia.

COVID-19 restrictions have resulted in a significant reduction in the numbers of international and interstate workers taking up seasonal roles in South Australia. Now, farmers are calling on South Australians to register as pickers, packers, tree planters, processors and helpers to keep our supply chain flowing so we can continue to have access to vital and locally grown food and beverages.

Seasonal workers are important to South Australia, and over the next 12 months, there will be hundreds of diverse jobs opening up in seasonal work across the state.

Seasonal Jobs SA is a temporary digital platform to show the types of seasonal roles in agriculture available, what skills and training are required, where the jobs are, and how to apply. It includes important information about COVID-19 restrictions and toolkit resources for workers and employers.

Employers will be able to list their available jobs for free on the job board.

Seasonal Jobs SA is an initiative of the South Australian Government, delivered by PIRSA.

Visit [www.seasonaljobs.sa.gov.au](http://www.seasonaljobs.sa.gov.au) to find out more.

### Plan how you stay safe

With what has been happening in other States at abattoirs, retail food sector and nursing homes, it is certainly not a time to be complacent or to relax in how you are managing Covid-19 in your business. We have seen how the virus can spread easily and rapidly through manufacturing and close contact situations.

Be aware of how your business is managing deliveries and visitors – anyone can be a vector and spread the virus to your business.

Some interstate businesses have been impacted by 14 day closures due to the virus being detected – **TO MINIMISE POTENTIAL IMPACT TO YOUR BUSINESS** make sure you’re able to demonstrate how staff/workgroups are maintaining distancing, how staff movements can be traced and tracked, and how your business is maintaining Covidsafe cleaning & hygiene.

Time spent now to review your systems and risk management arrangements is an investment in your business.

**Plan how you reopen and stay safe** - The National COVID-19 Coordination Commission has developed a planning tool to help you develop a plan to keep your workers, customers and the community safe as you reopen or increase your business activities. View the planning tool [here](#).

For the most recent information on SA’s response to the Coronavirus pandemic visit [www.sa.gov.au/COVID-19](http://www.sa.gov.au/COVID-19).



## Genetic Crops—A result.

The South Australian Parliament has now passed a law which will enable the growing of genetically modified crops in South Australia.

Under agreed amendments to the *Genetically Modified Crops Management (Designated Area) Amendment Bill 2019*, local councils now have a time-limited ability to apply to remain a GM-free area, but ultimately the final decision will rest with the Primary Industries and Regional Development Minister.

SADA urges the Minister to take a conservative approach to a council application to remain GM free and a council should offer more than a “just because” approach to making such an application to the minister. For too long SA farmers have been forced to sit behind the eight ball when it comes to competing with other jurisdictions. An application by a council to the minister that is not based on either science or sound business considerations should not rate highly on the minister’s list of considerations.

SADA looks forward to its membership being able to be more effective by relying on technologies that will have the effect of lowering the costs of doing business and/or increasing productivity.

## Trespasses will be prosecuted Cont.

“Those found guilty could face a \$10,000 fine or 12 months in prison, as well as paying compensation to the farmer.”

Other legislative changes include:

- increasing the penalties for interfering with farm gates from \$750 to \$1,500 and introducing on-the-spot fines of \$375 for this offence
- increasing penalties for disturbing farm animals to \$2,500 or 6 months imprisonment
- doubling fines for other trespassing offences if they take place on primary production land.

SADA also wishes to acknowledge the work that was done on this Bill by the former SADA President, now Member for Finnis, David Basham, who has maintained an active interest in the changes to the law throughout the whole process.

While SADA did not get all that it lobbied for, (we wanted a farmer right to issue a trespass notice), the changes are a substantial improvement to the law and much of what has been adopted were based on recommendations made by SADA.

Furthermore, SADA notes that as other jurisdictions have moved in this direction the incidence of farm trespass reported in the media has sharply diminished. Clearly the message is getting through, however, we continue to urge vigilance on the part of all farmers.

## Coles Moves into SA

COLES has announced that it will expand Coles’ direct farmer to retailer drinking milk approach into SA (as well as WA). Coles began recruiting suppliers on 14 May 2020.

Coles began purchasing directly from farmers in Victoria and New South Wales in July last year. The model sees Coles directly purchasing milk from farmers and arranging pick up of the milk. SADA understands that Saputo does the direct bottling as a contract processor/bottler in those jurisdictions however, the contractual relationship is directly between Coles and the farmer. Coles will probably turn to Lion and Lactalis in Adelaide to do the bottling.

Coles’ commercial chief executive Greg Davis indicated that Coles believe that enlarging the approach would result in a more competitive farmgate price being offered to dairy farmers.

Mr Davies has indicated Coles’s pride in offering a new pathway to farmers to enter the supermarket space and Coles was looking forward to extending their operation into SA.

Mr Davies told the Weekly Times that “By offering farmers the opportunity to lock in a price and giving them choice on the length of contract, Coles is investing in the long-term sustainability of our suppliers and the Australian dairy sector.”

Coles will offer one and two year contracts to farmers to supply milk directly to the supermarket chain. SADA notes that both Coles and Woolworths have moved away from the \$1 milk product and now that Coles is a direct purchaser in SA, SADA urges farmers to shop around for who they supply.

## The Lower Lakes have been (mostly) fresh for at least 2,000 years

During the awful drought that has brought so much suffering to the farmers in the Murray Darling Basin there have been increasing calls to find extra sources of water. This has led the NSW Deputy Premier, amongst others, to call for the removal of the barrages in the lower lakes of the Murray, near the Murray mouth. The lakes evaporate up to 800 G/L each year. The Murray Darling Basin plan commits water to the lakes from the Murray to maintain the lakes in a fresh state as well as in assisting to keep the mouth of the Murray open to the sea.

The suggestion was that by removing the barrages and installing a further lock (lock zero) at Wellington that 800 G/L could be retained for use by farmers upstream thus assisting them through their period of real pain. Poor journalism has compounded the issue.

In assisting to add to the muddy the waters Peter Gell (School of Health and Life Sciences, Federation University Australia, Ballarat), released a paper considering the lower lakes on 20 June 2019, called *“Watching the tide roll away – contested interpretations of the nature of the Lower Lakes of the Murray Darling Basin”*, which added fuel to the debate. The independent review into the science informing water management of the lower lakes was authored by Dr Francis Chiew of CSIRO and four other experts in the field. Released under the imaginative and pithy



title: *“Independent Review of Lower Lakes Science Informing Water Management”*

Review findings: In 2020 the independent panel delivered their findings. Key findings include:

Removing the barrages would have significant ecological and socio-economic impact.

- Without the barrages, the freshwater values in the Lower Lakes cannot be maintained.
- This will significantly change the ecological character of the Ramsar-listed site, which is a wetland of international importance and which we have an international obligation to maintain.
- This will also impact traditional owner values and other socio-economic values that are reliant on a healthy Coorong, Lower Lakes and Murray Mouth system.

Removing the barrages would not result in any water savings if targets informed by science and modelling and envisaged under the Basin Plan are to be met.

- The additional Murray River inflow secured under the Basin Plan has been shown to enhance the ecological outcomes, building resilience in the system and providing some inflow during dry years.
- Environmental water is managed for multiple benefits, where water is reused as it flows down the river, to sustain a healthy system across the entire Basin. Most of the environmental water reaching the Lower Lakes has also benefited upstream assets.
- Removing the barrages would not result in any water savings if targets informed by science and modelling and envisaged under the Basin Plan are to be met.



Under climate change, the management of the Coorong, Lower Lakes and Murray Mouth would become increasingly challenging.

- Sea level rise would alter the hydrodynamics of the Coorong and Murray Mouth, and cause more seawater to flow into the Lower Lakes. Evaporation from the Lakes would be higher. Therefore, more Murray River inflow would be needed to achieve Coorong, Lower Lakes and Murray Mouth outcomes. However, catchment runoff in the southern Murray-Darling Basin is projected to decline under climate change.
- There are gaps in the knowledge of the biophysical impact under climate change, and the social, environmental and economic vulnerabilities. There is a need to develop adaptation options, not just for the Coorong, Lower Lakes and Murray Mouth, but as part of the whole Murray-Darling Basin system.

The effect of all of this is that returning the lakes to a saline condition would amount to a fundamental ecological change doing harm to the Ramsar listed site and potentially placing Australia in breach of its international agreements in protecting the site.

It is unlikely that this will be the end of the debate. However, the upside is that the rains which are now falling in the Murray Darling Basin and which are predicted to continue raining for the next six months will take some of the heat out of the debate.

# South Australian Dairy Action Plan update

Written by Ashleigh Pulford ■

Whilst stuck at home, things have certainly not slowed down in terms of how we are progressing with the plan. Most recently we have been working on two key projects that will advance the industry – one being a traceability system and the other being a school project to engage more kids in the dairy industry.



Ash spoke on the ABC radio Riverland and SE report last week to talk about a “Cows in the Classroom” project that will deliver an unpainted fibreglass cow to (hopefully) all schools in South Australia. We hope that this will then be used as a practical learning resource across the year levels to show school children what processes go on in the dairy industry – from milking cows to processing milk and beyond. We hope (with assistance from Dairy Australia) to get some learning modules and resources to accompany these cows. There have been some good responses from schools willing to get their hands on of these cows and we are hoping to have these implemented in the near future.

Our other project is around a **traceability framework** for the whole supply chain. After an article talking about a “grass to glass” traceability system, we have been in talks with many technology companies that are able to provide a software framework to achieve this. Andrew, John and myself as well as other SADA team members and possibly the board, will be in talks with these companies to see what they can offer us and how it can be applied to the

dairy industry. We are still waiting to hear back about the grant that we applied, so in the meantime are looking at other opportunities to get this started.



If you have any questions or comment about either of these projects, please feel free to contact Ashleigh on 8293 2399 or [Ashleigh@sada.asn.au](mailto:Ashleigh@sada.asn.au)

## Did you receive a call from the SADA over the past few weeks?

Ash and John E have been telephoning individual SADA members to see how they're tracking. Again, generally the news is okay. There were some reports of parts, supplies and equipment deliveries having been impacted, however, those issues are generally being seen as a nuisance rather than a critical issue. Recent activity suggests that that material is getting through more expediently now.



## Around the grounds

- SADA continues work on the underpass project, there are now two elements to this project. One discussions with the Department of Infrastructure regarding a general government policy and the other is preparing a bid under the government's Regional Growth fund.
- SADA has also been in communications with ADPF regarding a national response across the dairy industry to the COVID-19 challenge. Generally, the dairy industry has been immune to the commercial contagion which has infected so many other industries.
- SADA attended the Departmental (PIRSA) Bio-security legislation review. SADA's position is that the current Livestock Act covers much of the field. However, the department is anxious to make certain that there is greater concurrence between the Livestock Act and other Acts which govern the management of the primary sector, particularly when it comes to emergency and disease outbreak management. SADA will maintain an active interest in the legislation's development.
- SADA is also continuing to work with the ADF and Dairy Australia to develop the resources for the roll out of the new Mandatory Code of Conduct for contracting in the dairy industry. The process of communications with processors, farmer organisations and Dairy Australia to create an agreed national standard form contract and legal resources kit for farmers continues with a goal of producing a usable national standard form contract and package that can support both smaller processors and farmers in particular. This work is ongoing.
- The Interim Inspector-General of Murray-Darling Basin Water Resources released a report on the Impact of lower inflows on state shares under the Murray-Darling Basin Agreement. Rob Kerin, Warren Jacobs and Amy Williams (PPSA) were key contributors to a report that is seen as a great result for SA de-bunking the myths which have led to much.
- SADA has regular catchups with Dairy Safe and Dairy SA to discuss coordination during COVID-19 and beyond.



SA Dairyfarmers' Association Inc  
Unit 5, 780 South Road, Glandore SA 5037  
P: 8293 2399 E: [sada@sada.asn.au](mailto:sada@sada.asn.au)  
[www.sada.asn.au](http://www.sada.asn.au)  
Or find us on Facebook

## SADA NEWSLETTER JUNE 2020

### Covid-19 and milk sales

#### Dairy Sentiment on the mend

The sentiment of Dairy Farmers to their industry has seen an improvement this year, however, the measure was taken prior to the restrained prices were offered on 1 June this year.

The National Dairy Farmer Survey conducted in February revealed that 44 per cent of farmers were positive about the industry's future, while 67 per cent were positive about their own farm businesses. This amounted to a 22 per cent increase on 2019.

Dairy Australia's *Dairy Situation and Outlook* reported on the survey. It reported that farmer confidence reflected a 10 per cent on last year. While optimistic at first blush the *Weekly Times* (Alex Sinnot) pointed out that the base was very low as it was compared to sentiment in the industry which was at its lowest point in over 15 years.

*Dairy Situation and Outlook* attributed the mood shift to early rainfall and lowering feed prices.

Nevertheless, a supplementary survey was conducted in early May. The report revealed that 20 per cent of farm businesses had been impacted by covid-19 restrictions in some way, including the ability to source farm based products.

Dairy Australia senior analyst Sofia Omstedt observed that Australia's milk production recovery had been driven in large part by favourable seasonal conditions in Victoria and Tasmania. However, it was noted that dry conditions and subsequent high input costs in other

parts of the nation have restrained the recovery beyond the south east of the continent.

"Input costs had become more manageable at the time of the survey. Favourable seasonal conditions have also been a factor in increased confidence," Ms Omstedt has told the *Weekly Times*.

The *Dairy Situation and Outlook* demonstrated how covid-19 restrictions in March substantially impacted the purchasing options exercised by Australian consumers.

The *Dairy Situation and Outlook* noted that the volume sales of long-life milk lifted by 76 per cent in the four weeks to the end of March while volume sales of fresh milk also went up by just under 5 per cent. Further in the three months leading up to 19 April, fresh milk volume sales went up by 3.8 per cent while butter volume sales grew substantially to a fraction under 32 per cent increase.

Ms Omstedt reported "Because most states and territories around Australia restricted cafes and restaurants to takeaway services only, sales in the foodservice sector declined significantly,"

"But with the decline in cafe and restaurant sales, more Australians had to cook from home and that's why butter and even fresh milk sales increased over the first four weeks of the coronavirus restrictions."

Access the full Dairy Situation and Outlook Report [here](#).

### Regional Growth Fund

now open



### One-off \$15 million funding round will help jump start regional economies

A special round of the Regional Growth Fund has been established to help fast-track the recovery of regional economies after COVID-19, and applications are now open. The one-off \$15 million Strategic Business Round 2020 will give grants from \$50,000 up to \$2 million to shovel-ready projects that drive new or enhanced activity and create jobs for our regional communities.

The Regional Growth Fund usually isn't available to individual businesses, however, the unprecedented nature of the coronavirus pandemic means there will be a once-off funding opportunity to stimulate investments by individual commercial enterprises.

Applications will be accepted from commercial enterprises, incorporated associations, and business clusters. Applications are open until 12pm on Monday 6 July 2020, and must be submitted online.

Full details, including eligibility and how to apply, are available on the PIRSA website [here](#).

If you would like to discuss an opportunity call the SADA Office.

# Staying within your available allocation



Government of South Australia

Department for Environment  
and Water

*A message from the Water Licensing Branch of the Department for Environment and Water to all water licence holders:*

As we are nearing the end of the 2019-20 water year on 30 June 2019, it is important that you closely monitor your water use to ensure that you have not taken more than your available allocation. Please note that a penalty will apply in all instances where the volume of water taken for the 2019-20 water year is in excess of the available allocation on a water account **at 5:00 pm on 30 June 2020**.

In order to remain within your available water allocation in this year and future years, you can:

- Stop taking water when you reach your allocation limit;
- Before you reach your allocation limit, trade water allocation onto your water account to cover your additional water needs. To comply with the Natural Resources Management Act 2004 [to be replaced by the Landscape South Australia Act 2019], to ensure that you do not exceed your available allocation and to avoid receiving a penalty charge, you need to trade water allocation onto your account before you take water above your current allocation limit; or
- Investigate whether water efficiency measures could be implemented for your property to decrease your demand for water.

You can submit an online meter reading at any time and elect to receive a water usage advice statement (similar to a bank statement) by email or SMS. This helps ensure you are monitoring water use and remaining within your available water allocation. The online meter reading form can be accessed by going to the following [website](#):

## Submitting meter readings

We wish to remind you that the requirement to provide a meter reading(s) to the department is coming up in July 2020. Your water licence conditions provide you with the details of your requirement, including the period when you need to record the meter reading and the deadline for providing the reading to the department.

If you do not have a copy of your water licence handy, you can look it up online on the Water Licence and Permit Register, using your licence number or land title. The register is at the following [website](#):

These meter readings will be used by DEW to determine the volume of water you used against your water account in the 2019-20 water year and are required to be submitted even if you haven't used any water. The 2019-20 water use year closes on 30 June 2020.

It is important to note that failure to comply with a term or provision of a water licence, such as not providing your meter reading(s) by the due date, is an offence under section 127(6)(ab) of the Natural Resources Management Act 2004 [to be superseded by section 104(7)(b) of the Landscape South Australia Act 2019] for which an expiation fee applies.

There are a number of ways that you can submit your meter reading(s) to meet your water licence obligation and to avoid an expiation fee:

Using the online meter reading form, by going to the following [website](#):

By email to: [DEWWaterLicensing@sa.gov.au](mailto:DEWWaterLicensing@sa.gov.au)

By calling the relevant water licensing office below, based on your location:

Contact numbers	Prescribed water resources managed by this office
Adelaide (08) 8463 6876	McLaren Vale, Northern Adelaide Plains, Western Mount Lofty Ranges, Far North
Berri (08) 8595 2053	River Murray, Angas Bremer, Eastern Mount Lofty Ranges, Mallee, Marne Saunders, Peake Roby and Sherlock, Clare Valley, Barossa Valley, Eyre Peninsula
Mount Gambier(08) 8735 1134	South East Region

If you would like any assistance, please do not hesitate to call the relevant water licensing office. We are here to help.'



*Improved dairy prospects see milk price forecast increase, but still long path ahead to recovery – Rabobank.*

Global COVID-19 restrictions are easing, food service sales have resumed and dairy prices look to be on the rebound, however Rabobank's Q2 2020 global **Dairy Quarterly** warns it may still be too soon to assess the true strength of the global dairy market.

Global dairy markets have, though, performed better than expected throughout the pandemic's disruption, with the report, titled *Waiting for the dust to settle*, revising up Rabobank's milk price forecast for Australia and New Zealand.

In Southern Australia, the modelled price is AUD6.35/kgMS – the minimum price announcement set for the new season above expectation, suggesting limited upside in the season ahead.

The just-released report also forecast milk production to continue expanding across the dairy-exporting regions, despite weather-related issues, lower milk prices and efforts to bring supply back in balance with demand in many areas.

Full media release [here](#).

## Better Farm Household Allowance support for farmers

New measures to improve the Farm Household Allowance (FHA) program are now in effect. These changes make the FHA payment simpler to access and improve the support available to farmers and their families. These changes continue the FHA reforms underway since the 2018 FHA Review. FHA legislative reforms will be complete on 1 July 2020 when the Business Income Reconciliation process is removed. View the media release [here](#).



## Positive news from Regional SA

More so than ever we need uplifting and positive news in our lives, so we encourage you to visit the South Australian Regional Showcase website [here](#) to read about some of the amazing and inspiring work occurring across our regions. PIRSA is proud to be the Major Partner of the South Australian Regional Showcase program which provides an opportunity to celebrate and promote the achievements of individuals, groups and organisations that have made significant contributions to regional South Australia.



**Government  
of South Australia**

Primary Industries  
and Regions SA

## Water Market Fundamentals

The recording of the Water Market Fundamentals – how to make it work for you webinar presented by Primary Industries and Regions SA (PIRSA) is now available [here](#). PIRSA now has a Water Market Literacy Program website which can be found [here](#).

You can find copies of all of the presentations from the above webinar.

You can register for free access to [Waterflow™](#) which provides an up-to-date, independent source of water market information.

PIRSA are holding a webinar on Wednesday July 22 entitled **2020/21 Irrigation Season – Diversify your water holdings**, and includes:

- Diversifying your water portfolio
- How to make use of interstate water products, addressing benefits and associated risks e.g. interstate site use limits and spill risks
- Case studies to demonstrate benefits, costs and risks of interstate water products.

If you are interested please register [here](#).



**Rural Business Support (RBS) engaged 30 dairy farming families to participate in a pilot Farm Business Strategic Review ('the Program') in South Australia in 2016.**

The Program included a review of each family farm's position, a comparison to the wider industry and financial analysis of options for improving the family's position. RBS engaged EconSearch to carry out an independent evaluation of the Program including a cost benefit analysis of quantifiable and qualitative benefits. You can read the entire research project [here](#).

## ADF is encouraging any interested farmers to apply for a position on the Dairy Australia Board.

This year, two vacancies exist for milk producers to become Non-Executive Directors on the Dairy Australia Board. The term of each Director is three years.

### Applications close in two weeks, on Wednesday 1 July at 5:00pm.

Formal applications/resumés can be emailed to Elizabeth Parkin, Secretary to the Dairy Australia Board Selection Committee at [elizabeth.parkin@dairyaustralia.com.au](mailto:elizabeth.parkin@dairyaustralia.com.au).

If you wish to discuss the application process for the milk producer roles, or to receive an information pack, please contact Elizabeth on (03) 9694 3836.

The successful candidates will be required to understand the responsibilities of, and obligations owed by, company directors, possess general commercial and financial literacy and are expected to act with integrity, honesty and in a collaborative manner.

In addition to these general skills, suitable candidates for the milk producer director roles will need a strong background and experience in all facets of milk production/dairy farm systems and demonstrated capability in identifying and evaluating technology and service programs to support the industry.

Ideally, they will also have had relevant experience in representing the needs of dairy farmers and in governance / board roles. Consideration will be given to the interest and aptitude of candidates to assume the role of Chair of the Dairy Australia board at some future point.

## Summary of feedback on draft Dairy Plan

A summary of industry feedback on the draft Australian Dairy Plan was published on 12 June 2020. It outlines themes and ideas in 19 items of feedback received from individuals and organisations prior to consultation closing on 19 March 2020 and next steps in the finalisation of the plan.

Read the [Summary of industry feedback on the draft Australian Dairy Plan](#).

## BIOSECURITY EXTENSION IN SOUTH AUSTRALIA

Biosecurity is a shared responsibility that requires collaboration between supply chain members, communities, and governments. Traditionally, communication about biosecurity has been the responsibility of State and Federal Governments. In South Australia, the Department of Primary Industries and Regions SA (PIRSA) is responsible for enforcing biosecurity legislation, which includes having systems in place to monitor, detect, respond to and control pest and disease incursion and associated food safety issues. Traditionally, biosecurity enforcement has relied on the top-down regulation of animal health and welfare, rather than working to implement sound biosecurity practices from the ground up.

If you would like to find out more, please give Pene Keynes a call on her mobile: 0401 798 224 or at the office: 8293 2399

## Around the grounds

- Milk prices have come out and contracts are available for display on all major processors bar one (UDC). This is a victory for dairy farmers who can now see the prices they're to be offered for milk from processors all around the country. SADA has been front and centre in providing input to the Government and the ACCC as to what needed to be in the Code from the outset. All processors with a turnover of more than \$10 million per year are obliged under the code to make public their intended contracts as well as the price they're offering by 1:30 on 1 June each year so farmers are in a position to compare.
- SADA has continued to work with its members and processors to give advice regarding contracts and what should be in them. SADA specifically recognises Beston for taking a positive attitude to building relationships with SADA to advance outcomes across the supply chain.
- SADA also attended the SA Government Covid 19 Primary Sector response team meeting. The SA government continues to brief SADA and other primary sector representative organisations regarding what is happening from an SA government perspective. Dairy has been largely unaffected by the crisis (with the possible exception of flavoured milk) and from a production point of view the process has been largely business as usual.
- SADA attending the quarterly PPSA Council Meetings, and the PPSA PIRSA Meeting with a presentation from Belinda Cay from Ag Communicators around an Educating Kids about Agriculture project. Bushfire Review including the Emergency Services Act.





SA Dairyfarmers' Association Inc  
 Unit 5, 780 South Road, Glandore SA 5037  
 P: 8293 2399 E: [sada@sada.asn.au](mailto:sada@sada.asn.au)  
[www.sada.asn.au](http://www.sada.asn.au)  
 Or find us on Facebook

# SADA NEWSLETTER JULY 2020



**ACCC** AUSTRALIAN  
 COMPETITION  
 & CONSUMER  
 COMMISSION

## The Code of Conduct at Work

The Australian Competition and Consumer Commission (ACCC) which is Australia's competition oversight body has made it clear that they will be closely monitoring compliance with the Dairy Industry Code of Conduct in the coming year. The ACCC second in charge Mr Mick Keogh has indicated that the watchdog will ensure that there is compliance with the Code of Conduct across the board.

At the heart of the Code of Conduct there is a clear focus on the milk supply agreements which have historically been vehicles that have trapped farmers into unfair arrangements. The ACCC has consistently laid the blame for these unfair practices at the feet of processors.

Mr Keogh indicated that the ACCC had commenced reviewing milk supply agreements since the requirement to publicly post the agreements online had come into force.

Now the ACCC is examining the posted contracts from an oversight perspective to ensure that the contracts are compliant with the Code of Conduct which contains a number of provisions that place duties and responsibilities on the shoulders of large processors in particular. Large processors are processors who have an annual turnover of more than \$10 million.

In speaking with Alex Sinnott from the Weekly Times Mr Keogh is quoted as

saying,

"The new code is designed to address a significant imbalance in bargaining power between processors and farmers,".

"Milk supply agreements offered by dairy processors must meet certain minimum standards, like including cooling off periods for farmers while not containing contract terms that were previously used to push risk onto farmers."



"The ACCC is aware of concerns that certain processors allegedly failed to publish milk supply agreements by the specified deadline, and concerns about the content of some agreements, and is investigating these matters,"

Mr Keogh told the Weekly Times that the ACCC's involvement had already seen a number of processors amending their practices.

"We note that some processors have voluntarily changed their approach after being contacted by the ACCC regarding code compliance issues," he

said.

Not complying with a penalty provision in the Code may result in:

- for processors that **do not** meet the definition of a small business entity — up to 300 penalty units (\$66,600 as of 25 February 2020) per breach
- for farmers and processors that **do** meet the definition of a small business entity — up to 100 penalty units (\$22,200 as of 25 February 2020) per breach.

Farmers and processors have different requirements with respect to complying with penalty provisions.

There has been a clear shift in the nature of what is happening in the marketplace. Opening prices have been posted along with their contracts in a level of transparency that has never been seen.

Several processors have already received corrective instructions from the ACCC and that has resulted in compliance actions by the processors.

SADA has been intimately involved with the development of the national code and it is pleasing to see that it has created a better balance between farmers and processors.



Now Available Digital Book

# Glyphosate Ain't a Monster

Article borrowed from the AustralianFarmers website at [farmers.org.au](http://farmers.org.au)

Glyphosate (or RoundUp as it is commonly sold) is in the spotlight following claims it may cause cancer.

AustralianFarmers busts the myths and explains why the science doesn't support this claim.

What is glyphosate?

Glyphosate is the active ingredient in the popular weed killer RoundUp, and about 500 other herbicide products. It's widely used by farmers, gardeners and other land managers. When applied, glyphosate prevents weeds from making the proteins they need to grow.

Why is glyphosate important?

Glyphosate allows farmers to control weeds from above the ground – doing away with the need to plough or till the soil. Reducing tillage maintains soil nutrients and improves water use efficiency.

Healthier soils mean higher yielding crops – a win for farmers and the environment.



Glyphosate is also used to control aggressive, noxious weeds such as serrated tussock and African lovegrass. If not controlled, these weeds can rapidly take over a landscape – at the expense of native pastures and biodiversity.

Why is glyphosate under pressure?

In September, a Californian jury found in favour of a plaintiff who alleged exposure to RoundUp, manufactured by Monsanto, had resulted in terminal non-Hodgkinson Lymphoma.

The jury drew on a study by the International Agency for Research on Cancer (IARC), which identified expo-

sure to glyphosate, as well as activities such as drinking hot drinks, frying food, and hairdressing, as 'probable carcinogenic' activities.

In 2016, the APVMA evaluated the IARC report and other contemporary scientific assessments as part of an established chemical review nomination process. The APVMA concluded that glyphosate did not pose a carcinogenic risk to humans and that there were no grounds to place it under formal reconsideration. The APVMA is a globally recognised, science-based regulator.

What does the science say?

No other agricultural chemical has been tested to the extent that glyphosate has. The scientific evidence supporting glyphosate's safety is clear and overwhelming.

In the past three years alone, regulatory authorities in the European Union, South Korea, Japan, Australia, New Zealand, Canada and the United States have publicly reaffirmed that exposure to glyphosate does not cause cancer.

More than 800 scientific studies and reviews, including numerous independent regulatory safety assessments, have informed and confirmed these regulators' stance.

A recent longitudinal study by the United States' National Institute of Agriculture followed 57,000 farmers and registered applicators of glyphosate for more than 20 years. The study found no connection between cancer and glyphosate.

Farmers take these issues seriously

Australian farmers are renowned across the world for producing high quality, safe, sustainable produce. It is a role they take very seriously.

Farmers put their faith in the regulator (the APVMA) to only approve for use products that are safe for the environment and human health.

Farmers care about their own health and that of their families, farm workers, communities and consumers.



**SOUTH AUSTRALIA POLICE**  
KEEPING SA SAFE

## [Cross Border Travel](#) [Online Applications](#)

A pre-approval process is now in place for travellers wishing to enter South Australia. The Cross Border Travel Registration should speed up the border crossing process and provide certainty for people who want to enter SA.

## [The Energy Efficient Communities Program](#)

Dairy Farming Business Grants provides dairy farming businesses with grants of up to \$20,000 to improve energy efficiency, reduce energy costs and lower on-farm emissions. Grants may be used for equipment replacement, component upgrades, energy audits or feasibility studies.

SADA has received a few offers to help Dairy Farms with their audits to access these energy efficiency upgrades for their sites. Please have a look at these links or give our office a call if you have any further questions.



**GREEN HOME  
GREEN PLANET**



**efficientsee®**

CLOSES AUGUST 17

## A key step in our water reform journey

Phillip Glyde, Chief Executive, Murray-Darling Basin Authority

With the size, complexity and controversy of the reform to secure the future of the Murray-Darling river systems and their communities, I find it hard not to get caught up in the detail of the many pieces of work required to roll out the Basin Plan. Each of the Plan's milestones contributes to the long-term reform that will ensure water is used sustainably. Published: 14 July 2020

### [Opinion pieces](#)



A SA Dairy Industry Fund project.

The Australian Dairy Industry requires intensive feeding and often high input regimes which expose them to growing input costs. In addition, dairies are contending with water security, drought and climate variability. This project set out to investigate the economic and farm health benefit by feeding biochar to dairy cattle.

We have created this [YouTube clip](#) of the biochar dung beetle work to date, a run through the animal, soil and plant health benefits of feeding biochar to a 250 Jersey Cow Herd on the Fleurieu Peninsula of South Australia.

[Here's a link to the online report.](#)

## Dairy Industry COVID-19 Directory

As the circumstances around COVID-19 continue to change, the dairy industry remains vigilant to protect our people and products.

We are responding to national and state-based regulations to ensure that dairy farm businesses and the broader supply chain continue to operate effectively through this period.

Updates on the latest restrictions and border closures in each jurisdiction can be found in [here](#) (last updated 8 July 2020).

ADF, ADPF and Dairy Australia have also created a [Certification Template](#) for people providing essential services (last updated 8 July 2020).

Dairy Australia and regional teams are working with industry partners, including ADF and ADPF, to provide industry-specific resources and extension programs to assist you in effectively managing your team and business during COVID-19.

This page has been developed to provide a comprehensive directory of all updates and relevant technical advice. Look for resources using the main menu (on the left of this page on desktop, and at the top of this page on mobile devices).

This directory of services does not seek to reproduce information available from responsible state and federal government agencies or other organisations, instead links to all relevant sources of information, acting as a single point of reference for dairy industry participants.

[This video shows some ways that everyone on farm, including visitors and service providers, can help to prevent the spread of COVID-19.](#)

## Nominations open for board members

South Australian Dairyfarmers Association are encouraging you to consider nominating for the SADA board. There are two two-year positions for the South East up for election this year.

To nominate, producers must be a member of SADA and must submit a nomination form on or before nominations close at 5pm on Friday August 14.

Successful candidates will be announced at SADA annual general meeting on September 15. The AGM will not be held in conjunction with the Royal Adelaide Show this year due to its cancellation.

SADA chief executive officer Andrew Curtis encouraged members to consider applying, *"Being part of the SADA board is a wonderful opportunity for dairy farmers to contribute to the future of their industry, It's also a great opportunity on an individual level to gain an understanding of how the Association works in advocating for the Dairy industry."*

## No Levy Increases for 2020

For the past two years the SADA Board had determined to restrain the annual fee review to an increase of CPI only. But for 2020-2021 year there will be no increase to levies. SADA subscriptions will remain at \$187.50 representing no increase in subscriptions for the year. The levy (annual cap) will remain at \$2,205 and the levy rate per kilogram of protein (Inc GST) will remain at \$0.0288. The amount per cow/per quarter (Inc GST) will remain at \$2.13. The SADA Board has been particularly mindful of the financial pressures farmers have been facing in the past couple of years and have sought to keep the impact of those pressures to a minimum.



## Applications sought for Marcus Oldham Dairy Farm Managers program 2021

Dairy workers seeking to build their farm business management skills or people interested in pursuing a career in dairy are encouraged to apply for the Dairy

Farm Managers program at Marcus Oldham College in Victoria. Three assisted places are available for next year's intake in the program, which was launched this year in partnership with Dairy Australia to develop business management capabilities in Australian dairy farming. The deadline for applications is 7 August 2020.

[For more information:](#)



## Australian Dairy Industry Sustainability Framework Webinar Series

[Brave New World – The Big Picture](#)

[Reducing Environmental Impact](#)

[Providing best care for all our animals](#)

[Improving the wellbeing of people](#)

[Enhancing economic viability](#)

**WFI, proud alliance partner of the South Australian Dairyfarmers' Association**



### Insurance Tailored to your farm.

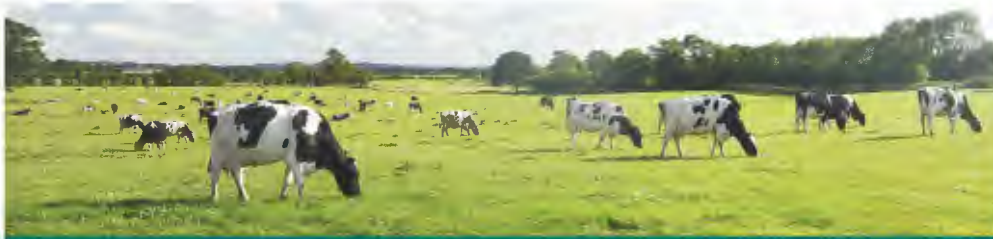
At WFI, we take the time to thoroughly understand your business and how it operates. Because when we get to know a business, we can protect everything that matters.

We're available to meet with you face-to-face to discuss your insurance requirements. That's just one of the reasons why we're good people to know for insurance.

### Why not call us for a quote?

With 100 years experience in the insurance business, WFI knows what you're looking for.

**To find out more about WFI's products, or to request a quote, contact your local Area Manager by calling 1300 934 934 or simply visit [wfi.com.au](http://wfi.com.au)**



## Around the grounds

- SADA assisted interstate dairy farming organisations regarding standard form contracts issued by processors as a result of the Dairy Industry Code of Conduct. This also included the development of a list of contract providers within South Australia.
- SADA Attended the PIRSA quarterly meeting between PIRSA and the primary sector in South Australia. From that meeting the BOM has indicated there are improving rainfall conditions currently and they are projected to stay at average rainfall or just above average rainfall.
- SADA prepared a letter to Australia's Chief Scientist (Alan Finkel) regarding the Commonwealth Government's Innovation discussion paper. The Commonwealth has announced an intention to increase expenditure in innovation for dealing with greenhouse gases. The discussion paper has barely referred to the rural sector. The letter to Finkel is to point out that future expenditure on greenhouse gas management should include consider the rural sector nationally.
- SADA team has completed a comprehensive Communication Plan and Value Chain Analysis for the Dairy Action Plan
- SADA attended a meeting regarding the future of Pasture Mapping.

**1300 934 934**  
**[wfi.com.au](http://wfi.com.au)**





SA Dairyfarmers' Association Inc  
Unit 5, 780 South Road, Glandore SA 5037  
P: 8293 2399 E: [sada@sada.asn.au](mailto:sada@sada.asn.au)  
[www.sada.asn.au](http://www.sada.asn.au)  
Or find us on Facebook

# SADA NEWSLETTER AUGUST 2020

## Cross Border Community Member Essential Travellers

Recognise that National Cabinet met on Friday 21 August and agreed to work towards national consistent border requirements. SADA is working with the ADF, DA and NFF to develop and support these rules.

In the meantime this is the situation as of 21 August 2020.

The transition period for the Emergency Management (Cross Border Travel No 11) (COVID-19) Direction which came into effect last Friday has now elapsed. A subsequent Emergency Management (Cross Border Travel No 12) came into effect at 12:01am on Friday 21 August 2020 which amended the Cross-Border Community Member exemption category. The current status of border permits relevant to the dairy industry is outlined below. Also, view frequently asked questions here.

Cross Border Community Members that travel to or from Victoria are no longer permitted unless for the following reasons:

- undertaking agriculture or primary industry work;
- undertaking year 11 or year 12 high school education; or
- transporting by private vehicle a person undertaking year 11 or 12 to or from their school.

**COVID-19 Testing Requirements** - Changes have been made to include Seasonal workers in the list of travellers that must have a COVID-19 test within the last 7 days and must produce evidence to an authorised officer if requested. Commercial transport and freight providers continue to be subject to the same requirement without change. All other Essential Travellers are still required to be tested on day one and twelve upon entering South Australia.

**Risk Mitigation Plans** - There are no changes to this requirement. Individual specialist workers can enter South Australia if their employer is applying risk mitigation strategies during periods of work in accordance with a risk mitigation plan relating to COVID-19 approved by the Department of Health and Wellbeing.

**COVID Marshal Requirements** - As of the 21 August 2020 a COVID Marshal is a person who must supervise prescribed operations. The 'prescribed operations' relevant to the dairy industry include: distribution centres (including associated transport operations), and retail operations (for example factory or farm shops).

### Tips for applying;

- If someone has had their Cross Broder Travel application rejected by SAPOL, it is likely that they need to fill out the SA Health Risk Mitigation Plan first, if you are needing a sample of this, please contact the office for further assistance, this will then need to be sent to the Assessment Team at SA Health for approval. [HealthExemptions.Covid19@eso.sa.gov.au](mailto:HealthExemptions.Covid19@eso.sa.gov.au)
- Once approved attach this to your Cross Border Travel application to SAPOL. Remember these applications are being sent through to a central office and assessed by SAPOL staff without strong knowledge of agriculture. <https://www.police.sa.gov.au/online-services/cross-border-travel-application>
- Focus on providing as much detail as possible in your application regarding both why cross-border travel is necessary and the service cannot be otherwise procured, and the measures being taken to control the risk associated with cross-border travel by the business.

For information regarding Primary Industries and COVID-19, including all past industry updates, please visit PIRSA's COVID-19 Primary Industries Portal. For the most recent information on SA's response to the Coronavirus pandemic visit [www.sa.gov.au/COVID-19](http://www.sa.gov.au/COVID-19).



# Nominating for a Board Position



## Could you be a Board Member on the South Australian Dairyfarmers board?

Nominations for the SADA Board are now open, following we take you through what it means to be a Director and their duties and obligations.

SADA has become a very diverse organisation operating a number of different aspects being the State Farming Organisation (SFO) arm for the National industry advocacy body Australian Dairy Farmers (ADF).

Strong connections with Dairy SA and Dairy Australia to ensure dairy farmers are well connected and up to date with the changing environment across the entire supply chain.

In 2012 we launched SADA Fresh . . .

Since then, we have evolved to become much more, the complexity of the organisation brings with it governance requirements and statutory compliance obligations that reach far beyond just attending meetings.

The SADA Board has the important responsibility of setting and reviewing the Associations strategic direction and to help ensure a strong future organisation for our members and the entire supply chain. The SADA Board oversees existing and potential risks, together with industry compliance across all areas of the business.

Risk management are a large part of the role, as is ensuring we meet the requirements of all relevant regulatory authorities. Our Board members are required to act in good faith and in the best interests of the organisation. The

Board members must ensure accounts and financial records of the organisation are presented accurately and fairly. Board members cannot improperly use information gained as a Board Member or act in the interests of another organisation while making decisions about the organisation.

SADA is committed to a long, prosperous future and we plan to continue to grow and develop our services to meet members needs in the future. Our Board members must keep up to date with changing governance and regulatory requirements in operations, finance, audit, risk, governance and community engagement and advocacy, and more.

The Board must continue to have a comprehensive understanding of our history and take account of what is best for our members in the future while managing all the requirements of their role.

To find out more about joining the SADA Board, visit [www.sada.asn.au](http://www.sada.asn.au) phone: 8293 2399 - email: [sada@sada.asn.au](mailto:sada@sada.asn.au)



The 2020 ADF Annual General Meeting (AGM) is scheduled for **Thursday, 26 November 2020**, In accordance with this meeting of members and the ADF Constitution, the Board must comprise of at least four (4) Business Directors, provided there are no more than two (2) Business Directors from any one state. Further, the constitution also states that the maximum term a Business Director may serve is three (3) years without submitting for re-election (clauses 4.3.1 and 4.3.2).

If you are interested in standing for election as a Business Director of ADF please give the office a call on Phone: 8293 2399, applications must be received by no later than **5.00pm Friday 11 September 2020**.



DataGene Limited delivers innovative, pre-competitive services to the dairy herd improvement industry. DataGene enable farmers to make timely and effective data driven decisions in genetics and herd management. The Board of DataGene is responsible for approving strategic and operating plans and setting performance targets. Ensures policies and systems are in place to manage risk and ensure high standards of accountability, ethical behaviour and legal compliance in accordance with DataGene's compliance framework. To enquire, please contact Nigel Crawley on 1300 380 701 or apply to [rimfireresources.com.au](http://rimfireresources.com.au) by Friday August 28th at **5PM**.

## SADA welcomes 100 % Water allocation

SADA has welcomed the minimum water allocations in 2020-21 for South Australian Class 3 (High Security) and Class 8 entitlement holders reached 100 per cent from 17 August 2020. This has risen from 81 per cent announced in August 2020.

Private Carryover was made available for eligible water users in the 2020-21 water year. This means that they were able to carryover their available allocation volumes that were not used by the end of the 2019-20 water year, up to 20 per cent of the volume of their Class 3 (High Security) entitlement.

The existing 100 per cent limit on the combined allocation and carryover volumes granted under Class 3 (High Security) entitlements continues to apply in 2020-21.

Under a rule change that came into effect on 1 July 2020, allocation volumes that would take an account above the 100 per cent limit in 2020-21 will be 'rolled over' into 2021-22.

Rollover volumes will only be available if the minimum opening allocation announced in April 2021 is 50 per cent or less, triggering carryover for 2021-22.

Now that allocations have reached 100 per cent this limit has been reached for all water users. Any part of an allocation increase that would have taken a water user above 100 per cent will now go into a rollover account.

There are currently two draft water related reports out for comment:

The [ACCC's MDB Water Markets Inquiry](#) and the [Productivity Commissions review of the National Water Initiative](#) (NWI).

Submissions on the ACCC Inquiry are currently due on 28 August 2020, while **submissions on the PC review are due 21 August 2020.**

Based on the questions asked in the ACCC Draft Report (which are focused on farmers' experiences of dealing with various groups and issues), the deadline of 28 August for submissions is not sufficient to allow industries to properly survey and consult with members (dairy irrigators) to build the sorts of meaningful responses the ACCC is looking for. I understand that the NFF is seeking an extension on this deadline and hopefully this will be available for other groups as well.

**Do any of you have any comments you would like to make to NFF or ADF water taskforce?**

## The Dairy Industry Fund Calls for new projects

The South Australian Dairy Industry Fund (SADIF), continues to support projects that support South Australian dairy farmers.

SADIF has now funnelled over a million dollars into projects that have had direct benefit to SA dairy farmers. Recent projects have included research into Biochar and value of dung beetles in South Australia. As these research projects move towards finalisation the indications are that very useful information for farmers will find their way into the final reports. This information will be made freely available to all dairy farmers in South Australia.

A number of farms have also received direct financial benefit from the quad bike roll over subsidy scheme which has been directly paid for by the fund. The Board is now calling for expressions of interest from farmers, industry and interested groups for further projects.

The criteria for consideration are deliberately broad so as to attract applications. Essentially, there needs to be a demonstrable link in the outcome of the project to deliver useful information or results for the dairy industry in South Australia.



## Nominations are open

Recognising South Australian towns that are excelling in agricultural practices and the flow on effect they have on their communities.

**NOMINATE A TOWN**

## Dairy Action Plan Update

- John and Ashleigh had further meetings with Beston Global Foods regarding the preparation of cheese for the domestic market and marketing of the products.
- Ashleigh met with Daniel Raschella to discuss the traceability project, looking at “mapping” the supply chain to estimate the minimum number of blockchains.
- John through his work for SADA Fresh is also following up inquiries from China regarding the provision of Whole Milk Powder through the milk chain partners that SADA currently exports.
- Ashleigh completed a report regarding the government’s support for the South Australian Dairy Industry Action Plan 2019-2024. The plan continues to be rolled out with the assistance of the South Australian Government, DairySAFE, the DIAA (SA) and of course ourselves. Work is particularly focusing on traceability of dairy in the supply chain.
- Ashleigh and John hosted a meeting between ADF, SADA and the DIAA to consider the next stages in a traceability trial hosted in South Australia.

## Around the grounds

- John attended the ACCC consultative committee advising the ACCC regarding the roll out of the dairy industry code. The meeting involved farmers from each state as well as processor representatives and representatives from the Federal Government. Without giving away confidences it seems most jurisdictions are now expressing their general support for the code.
- SADA also prepared a submission to the Coorong Council regarding the review of their position on GM products. The recent compromise in the Parliament has led to the matter of GM products being remitted to local councils to determine if they want to permit GM into their council areas. SADA continues to advocate for GM permissibility in all council districts which have dairy farms on economic grounds.
- Together with Amy Williams, Andrew met with David Pisoni, Minister for Innovation and Skills to discuss the Agribusiness Industry Skills Council and the Training & Skills Act Review. The impact of COVID-19 on the availability of skilled workers across a range of agricultural sectors was discussed.
- John attended the farm to assist that person with a contractual issue they were having with their processor. Contact was made with the processor during the course of the week and the contractual matter was resolved to the satisfaction of both parties.
- John also attended a briefing regarding the operation of South Australia’s Mining Act and its regulations. While few members of SADA may be impacted by mining activity there always remains the possibility that a dairy farmer may be impacted. SADA also assists other primary sector organisations where possible with such matters as part of being the premier representative organisation in South Australia.

WFI, proud alliance partner of the South Australian Dairyfarmers’ Association



### Insurance Tailored to your farm.

At WFI, we take the time to thoroughly understand your business and how it operates. Because when we get to know a business, we can protect everything that matters.

We’re available to meet with you face-to-face to discuss your insurance requirements. That’s just one of the reasons why we’re good people to know for insurance.

### Why not call us for a quote?

With 100 years experience in the insurance business, WFI knows what you’re looking for.

To find out more about WFI’s products, or to request a quote, contact your local Area Manager by calling 1300 934 934 or simply visit [wfi.com.au](http://wfi.com.au)



1300 934 934  
[wfi.com.au](http://wfi.com.au)





SA Dairyfarmers' Association Inc  
 Unit 5, 780 South Road, Glandore SA 5037  
 P: 8293 2399 E: [sada@sada.asn.au](mailto:sada@sada.asn.au)  
[www.sada.asn.au](http://www.sada.asn.au)  
 Or find us on Facebook

# SADA NEWSLETTER SEPTEMBER 2020

The deal to sell the maker of Pura milk, Dare iced coffee and Yoplait yoghurt to a Chinese company for \$600 million, has been canned, after Josh Frydenberg decided the sale was "contrary to the national interest". The Japanese-owned, Kirin announced the sale of Lion Dairy



and Drinks to China's Mengniu Dairy late last year. The deal however has run aground on the reef of Sino Australian

relations. China has already fired rounds in the trade dispute by imposing trade sanctions on a number of Australian exporters. The story was broken in the Australian Financial Review which reported that the Federal Treasurer had moved to stop the acquisition.

Kirin has issued a statement announcing the end of the deal.

"Lion notes that China Mengniu Dairy Company Limited has been awaiting the outcome of the Foreign Investment Review Board review of its proposed purchase of Lion Dairy & Drinks," the statement said, "We are disappointed with this outcome and will now consider pathways forward in relation to the Lion Dairy & Drinks business."

The Federal Treasurer Josh Frydenberg said, "This follows the communication of my preliminary view to Mengniu Dairy that the proposed acquisition would be contrary to the national interest".

Lion owns several iconic brands including Dairy Farmers, Masters and Pura milk. Lion's range also includes Dare and Farmers Union iced coffee; Big M, Dairy Farmers and Pura Classic flavoured milk; Vitasoy soy milk and coconut milk; juice brands Daily Juice, The Juice Brothers and Berri; and Yoplait yoghurt.

The ACCC approved the Lion sale in February, after considering the potential impact on competition.

*SADA encourages both Australia and China to think about the consequences of a trade war between the countries and urges both sides to be mindful of the consequences to farmers, processors and trade partners in both countries.*

## Producers transporting stud stock to clients in other states.

Primary Industries are an essential industry and selling of livestock is an essential service. The police are aware of this and provisions have been made to enable producers to deliver livestock to clients.

Producers are advised to apply using the 'Commercial transport and freight services' and will still need to go through the required process as shown online, aim to complete the cross border travel registration form at least 14 days before you leave. Below is the link to the application form and relevant information.

<https://www.police.sa.gov.au/online-services/cross-border-travel-application>

South Australian primary producers can now apply to the **On-farm Emergency Water Infrastructure Rebate Scheme** under a new round of funding. You may be eligible to receive a rebate of up to 30% (max \$30,000) for the cost of purchasing, installing and repairing on-farm water infrastructure for livestock and permanent horticulture. **Applications close on 31 March 2021.**

[For more information and program guidelines please visit the PIRSA Website](#)



Zoom in to the 2020 SADA AGM  
 Tuesday 13 October, 10am

[Register here](#)

# Global Dairy Demand showing signs of recovery



Over the past four months, governments around the world have ramped up efforts to curb the spread of COVID-19. Now many countries are phasing out restrictions and consumers are beginning to revert back to more 'typical' spending behaviours. Global dairy demand is showing signs of recovery as food service outlets, such as cafes and restaurants, are reopening and restocking supply.

Furthermore, increases in government market intervention has added support to some products and seen cheese pricing in the Northern Hemisphere rally. Despite improved demand and rebounding commodity prices, the dairy market outlook remains precarious. Low economic growth will likely weigh on demand in coming months, as countries continue to grapple with the pandemic.

Government market intervention across the Northern Hemisphere, aimed at re-balancing milk supply and demand, has added support to some commodity prices. In the United States, at the same time as many dairy producers reduced supply and food service outlets began to reopen, the government purchased dairy products to fulfil farmer support packages. This ultimately caused a market imbalance, particularly for cheese.

Block cheese prices increased to an all-time high in July, following a 20-year low in April. While some commodity prices continue to rebound, it is hard to gauge the true strength of the market.

Meanwhile, the European Commission and European processors implemented incentives to slow milk production and combined with dry conditions in parts of northern Europe, this appears to have been fairly effective. The European Union's private storage aid program announced in April — which provided subsidised storage for butter, cheese and skim milk powder (SMP) — has now closed.

A total of 135,543 tonnes of dairy products entered the program, with butter accounting for the largest share (50 per cent), followed by cheese (35 per cent) and SMP (15 per cent.) Looking ahead, tighter milk supplies in the EU could help keep a level support for prices. A rebound in commodity prices has also been witnessed in the Southern Hemisphere. Overall, the commodity index jumped 8.3 per cent at the last Global Dairy Trade auction (event 263).

This is the fourth consecutive improvement to the index. Whole milk powder (WMP) led the gains, up 13.4 per cent, while SMP lifted 3.3 per cent. Greater demand for WMP can be attributed to higher volumes offered at the auction and demand generated from the food service industry.

However, the level of inquiry for short-term contracts indicates this degree of appetite may be short lived. Improved global demand and rebounding commodity prices (as a result from government intervention and the reopening of food service channels) has

given the market a sense of recovery. With local and global economic growth forecasts revised downwards and the ongoing risk that COVID-19 presents, is this a false sense of revival? The International Monetary Fund downgraded its global economic growth forecast by a further 1.9 percentage points to better reflect a much deeper economic fallout than first estimated (to total a 4.9 per cent contraction).

The revisions were not isolated to specific economics and were more widespread across all regions.

As governments begin to wind back support measures in efforts to limit budget deficits, the economic fallout will likely have an ongoing impact on dairy demand — particularly for price-sensitive markets across Asia. Additionally, a rise in infection rates and the re-introduction of lockdown restrictions (as seen in Melbourne) continues to pose systemic risk.

The momentum observed in the dairy market following an easing of lockdown restrictions has been a welcomed sign. In particular, the reopening of food service channels and sustained higher retail sales of dairy products has continued the recovery in dairy commodity prices.

While this is encouraging, many risks remain. The ongoing disruption to the world economy and everyday lives brought on by COVID-19 is likely to influence the market in the year to come.

# SADA

## Fresh

### SA Dairy Industry Fund update

The South Australian Dairy Industry Fund (SADIF), supports projects that support South Australian dairy farmers.



The [Limestone Coast Leadership Program](#) which supports and builds community capacity, ensuring relevant skills, emotional intelligence, cross-sector collaboration skills and abilities to work with, and influence others for the benefit of the region. Sessions of the program are delivered in each of the seven council areas across the Limestone Coast. In particular, Wattle Range Council and the District Council of Grant are concentrated Dairying areas.



### We want to hear from you

The Department of Primary Industries and Regions (PIRSA) is undertaking a strategic review of the Women Influencing Agribusiness and Regions Program (WIAR), as part of the development of a broader Diversity in Agribusiness strategy.

An independent panel has been established to oversee this review and is seeking your valuable feedback to help identify program strengths and areas for improvement.

We have engaged independent Adelaide research agency, Square Holes to conduct a survey to collate this feedback. The survey is composed of up to 30 questions and will take about 10-15 minutes.

### [Take part in the survey](#)

We highly value your participation in the research, and all responses are anonymous and confidential.

Please contact; [research@squareholes.com](mailto:research@squareholes.com) or call 08 8232 3355 for any assistance.

## Murray-Darling Basin Communities Investment Package



- The focus of the investment package is about 'putting communities and jobs at the heart of the Murray-Darling Basin Plan'
- The Australian Government's new approach to implementing the Basin Plan is focused around three high level objectives that are supported by practical and realistic actions:
  - Invest in community resilience and river health
  - Build trust, transparency and accountability in government
  - Improving implementation of the Basin Plan
- The package includes \$234.2m invested through 11 new initiatives, with detail in the attached document. This includes:
  - \$54 million available to support Murray-Darling Basin communities and rivers through two competitive grant programs – an extended Murray-Darling Basin Economic Development Program and a new Healthy Rivers Program both of which are designed to turn local ideas into action.

Building a web-based, real-time water information platform to be the single point of truth for communities on water storages, flows and trade information

<https://vimeo.com/457606665>



## Agribusiness Australia

This event will explore the structure of the Agri-food Tech ecosystem, outlining how it can lead to the emergence of a vibrant AgTech industry and economic growth in Agriculture and regional areas.

### Wed 30th Sept 2020 at 1pm

Register by: 29th September 2020 [TO REGISTER CLICK HERE](#)

Nominations are closing soon for the 2020 Excellence in Agriculture Awards.

To find out more and apply, visit [www.agbureau.com.au/awards](http://www.agbureau.com.au/awards)



# Fair Work Australia

## New Videos From Fair Work Australia

Fair Work Australia has developed a series of myth-busting videos to answer some questions you may have around COVID-19 and workplace rules. The first video covers advice on leave accrual while an employee is stood down or on JobKeeper.

Watch the video [here](#).

Find out more at the Fair Work Australia website [here](#).

**WFI, proud alliance partner of the South Australian Dairyfarmers' Association**



### **Insurance Tailored to your farm.**

At WFI, we take the time to thoroughly understand your business and how it operates. Because when we get to know a business, we can protect everything that matters.

We're available to meet with you face-to-face to discuss your insurance requirements. That's just one of the reasons why we're good people to know for insurance.

### **Why not call us for a quote?**

With 100 years experience in the insurance business, WFI knows what you're looking for.

**To find out more about WFI's products, or to request a quote, contact your local Area Manager by calling 1300 934 934 or simply visit [wfi.com.au](http://wfi.com.au)**



**1300 934 934**  
**[wfi.com.au](http://wfi.com.au)**



## **Around the grounds**

- The SADA Fresh cheese product has progressed with all things being equal, will be delivered to Coles in the coming fortnight.
- We provided advice to a processor regarding their obligations under the Dairy Industry Code. The meeting enabled the processor to understand their rights and obligations under the Code. This represents the nature of the relationship between farmers and processors in SA. Where else in the country would a processor contact a farmer organisation to seek advice in matters involving the supply chain? This is a product of concentrated efforts by SADA to build bridges.
- We also provided advice to a farmer regarding a contract they had received from a processor. This was independent of the advice sought from the processor above as it involved a different processor. SADA regularly advises parts of the supply chain on the code and other contractual matters.
- Advice to farmers regarding the proposed amendments to pastoral leases legislation as well as discussing the general principle of native title.
- We hosted a meeting at the Oakbank Hotel with the key volunteers who help run the depot during the Cuddlee Creek fires. A discussion was held on how we went, and what improvements can be made to ensure the depots can run more efficiently in the event of another fire. Recommendations for next time included safety marshals, higher documentation of persons coming/going and WHS implementation.
- Collaboration with Grain Producers SA regarding regulations under the Mining Act.



SA Dairyfarmers' Association Inc  
 Unit 5, 780 South Road, Glandore SA 5037  
 P: 8293 2399 E: [sada@sada.asn.au](mailto:sada@sada.asn.au)  
[www.sada.asn.au](http://www.sada.asn.au)  
 Or find us on Facebook

# SADA NEWSLETTER OCTOBER 2020

**SADA launches new SADA Fresh cheese range in Coles**

South Australian consumers wanting to buy local and support SA dairy farmers will have a new way to show their support for our industry. The SADA Fresh cheese range is the new cheese range available to SA consumers as a result of a partnership led by SADA in collaboration with Coles, Beston Global Foods and Australia's Finest.

The cheeses, which includes Cheddar, Gouda and Colby lines, were launched by Minister for Primary Industries and Regional Development David Basham at Coles Victor Harbor. SA consumers best know the SADA Fresh brand for its trusted range of low fat and full cream milk, first sold in 2013 with a portion of sale proceeds going to an industry development fund to support SA dairy industry research and projects. This fund has funded over a \$1 million in research and industry support projects. SADA Fresh cheeses will further assist SADA to support farmers through their advocacy work.

Minister Basham said South Australia has a long and proud history of producing premium milk and dairy products. "I was lucky enough to launch the SADA milk range back in 2013 as association president and I'm now proud to be launching SADA's new cheese range as Minister,"

"One of the key aims of the SA Dairy Industry Action Plan is for the state to be globally recognised as one of the safest and greatest places to obtain dairy products and this will add to this premium reputation we are building – both locally and internationally."

SADA President John Hunt said the cheese range means SADA will be able to expand its work in promoting the interests of SA dairy farmers while continuing to build collaborative manufacturing relationships across the supply chain. "SADA is grateful to Coles and Beston for supporting SA producers, this means that our farmers sell more milk, South Australian cheese makers, cutters, packers and transporters are employed and consumers can purchase quality South Australian produce with confidence."

Coles Head of Store Operations SA/NT Neil Borrington said Coles is excited to stock SADA Fresh cheese which will support the state's dairy farmers.

"We know our customers love to buy products made in South Australia," he said. "Since launching SADA Fresh milk in our supermarkets seven years ago, it's become the most popular branded milk at Coles in South Australia and we think our customers will also really love SADA Fresh's cheese."

Beston Global Food Company Chairman Dr Roger Sexton said the company is proud to partner with SADA on this initiative to deliver strong support to SA dairy farmers.

"It is with great pleasure that Beston Global Foods has entered a supply arrangement with SA Dairyfarmers Association to provide high quality cheese styles for distribution across Coles SA network," he said.

"We continue to deliver strong milk pricing to South Australian dairy farmers which represents our confidence and material contribution to a strong SA dairy industry."

"In combination with SADA and Coles, it is heartening to be able to turn Beston's investment in SA farmers, into products that provide quality alternatives to interstate dairy products on Coles shelves in South Australia, and helps firm up the South Australian dairy farmer's future."



# Australian Dairy Farmers 2020 Federal Budget

## Initiatives impacting agriculture (dairy)

### Temporary full expensing to support investment and jobs

The Government will support businesses with aggregated annual turnover of less than \$5 billion by enabling them to deduct the full cost of eligible capital assets acquired from 7:30pm AEDT on 6 October 2020 (Budget night) and first used or installed by 30 June 2022. It will improve cash flow for qualifying businesses that purchase eligible assets and bring forward new investment to support the economic recovery.

### Job Maker Hiring Credit

The Government will provide \$4.0 billion over three years from 2020-21 to accelerate employment growth by supporting organisations to take on additional employees through a hiring credit. The Job-Maker Hiring Credit will be available to eligible employers over 12 months from 7 October 2020 for each additional new job they create for an eligible employee.

### Improving energy affordability and reliability

The Government will provide up to \$134.7 million over four years from 2020-21 to support investment in dispatchable generation and reliable energy supplies in the National Electricity Market (NEM) and the Wholesale Energy Market in Western Australia.

### National Water Grid — investing in a long-term approach to water infrastructure

The Government will provide \$2.0 billion over ten years from 2020-21 for the development and delivery of a 10-year rolling program of priority water infrastructure investments that support agricultural output, increase water security and build resilience.

### COVID-19 Response Package JobKeeper Payment extension

The JobKeeper Payment is a wage subsidy that supports employees of businesses and not-for-profit organisations, significantly affected by the COVID-19 pandemic, remaining connected with their workplace. The Government announced changes to the JobKeeper Payment on 7 August 2020 in response to the evolving COVID-19 situation in Victoria, which resulted in an additional estimated cost of \$15.6 billion in 2020-21. The policy changes announced were:

### Increase the small business entity turnover threshold

The Government will expand access to a range of small business tax concessions by increasing the small business entity turnover threshold for these concessions from \$10 million to \$50 million.

Businesses with an aggregated annual turnover of \$10 million or more but less than \$50 million will for the first time have access to up to ten further small business tax concessions in three phases:

In addition, from 1 July 2021, the Commissioner of Taxation's power to create a simplified accounting method determination for GST purposes will be expanded to apply to businesses below the \$50 million aggregated annual turnover threshold.

### Murray-Darling Communities Investment Package

The Government will provide \$269.6 million over four years from 2020-21 (and \$9.8 million per year ongoing) for a package of measures to achieve a sustainable and certain future for the Murray-Darling Basin, its people, industries and environment, and in response to findings of the Independent Assessment of the Social and Economic Conditions in the Murray-Darling Basin and the First Review of the Water for the Environment Special Account.

### Improved Access to Agricultural and Vet-

### erinary Chemicals Program — extension

The Government will provide \$2.4 million over four years from 2020-21 (including \$0.1 million in 2024-25 and 2025-26) to extend the Improved Access to Agricultural and Veterinary Chemicals program. The program will help farmers gain improved access to safe and effective agricultural and veterinary chemicals.

### Supporting Regional Australia

The Government will provide:

\$100.0 million over two years from 2020-21 to facilitate Regional Recovery Partnerships with states, territories and local governments to support recovery and growth in 10 priority investment regions.

\$30.3 million over two years from 2020-21 to extend Round One of the Regional Connectivity Program to support the delivery of reliable, affordable and innovative digital services and technologies in regional Australia.

### Employment Services

The Government will provide \$17.4 million over two years from 2020-21 to temporarily modify the existing Relocation Assistance to Take Up a Job Program to make it available to all job seekers participating in employment services, and to those who temporarily relocate to take up agriculture work.

*NFF—Budget backs farmers  
and the bush to get  
Australia growing*

### Josh and Scott go driving



# Preparation the key as the Bureau releases its Severe Weather Outlook

Issued: 12 October 2020

The Bureau of Meteorology has released its [Severe Weather Outlook](#) for October to April, showing an increased risk of flooding for eastern Australia and tropical cyclones in the north, with roughly average potential for heatwaves and severe thunderstorms.

The current La Niña is likely to bring more rain to eastern and northern Australia, with some drought affected areas already seeing rainfall deficiencies ease and water storage levels increase.

After the catastrophic fires of last summer, it's a very different bushfire outlook this season, with average fire potential for most parts.

"This fire season we're expecting wetter than average conditions in eastern and northern Australia, so long running large bushfires are less likely, however a wetter spring can lead to abundant grass growth, which could increase fire danger as it naturally dries during summer."

"Meanwhile, if dry conditions continue in southwest Western Australia as forecast, the potential for more fire weather days there

could increase."

The Bureau's General Manager of Decision Support Services, Sandy Whight, said the lower fire risk across much of Australia is no reason for complacency.

"Southern Australia is one of the most bush-fire prone places in the world in any summer and it's important to remember that, right across Australia, even short periods of hot and windy weather will raise the fire risk, so communities need to have their bushfire

## SOUTH AUSTRALIA

More grass growth in spring could raise the risk of grass fires in summer

During La Niña, heatwaves may last longer and be more humid, though there may be fewer days of extreme heat compared an average season

La Niña is likely to bring more rain than usual through what is usually a very dry period in SA

plans ready.

"La Niña also brings more rain and increased humidity, which can mean fewer extreme heat days. But while heatwaves may not be as severe, the Bureau's advice is that in southern areas they may last longer and be more humid – both of which can increase

the risk to human health. Be sure to monitor the Bureau's [heatwave service](#), which provides information about the location and severity of heatwaves."

The Bureau is committed to keeping Australians safe. We support emergency partners and the community to prepare for the impacts of severe weather through regular forecasts, warnings, monitoring and advice.

Now, more than ever, it's vital to heed the Bureau's warning to [Know your weather. Know your risk.](#)

A [Digital Media Kit](#) is available for media, featuring explainer videos, blogs, graphics and more.

You can view the Bureau's severe weather outlook page here: [www.bom.gov.au/knowyourweather](http://www.bom.gov.au/knowyourweather)

You can view the Bureau's Tropical Cyclone Season Outlook here: [www.bom.gov.au/climate/cyclones/australia/](http://www.bom.gov.au/climate/cyclones/australia/)

More information on La Niña impacts is at: <http://media.bom.gov.au/social/blog/2440/explainer-what-is-a-la-nia/>

## SADA Fresh SA Dairy Industry Fund

The South Australian Dairy Industry Fund (SADIF) is looking for suitably qualified candidates to join its skills-based board.

SADIF was officially formed in October 2014 to finance projects that directly benefit the South Australian dairy industry and its communities. It is managed by a small voluntary board, and is funded by proceeds from the sale of SADA Fresh brand milk. The ground-breaking milk brand was launched by the South

Australian Dairyfarmers' Association (SADA) in October 2013 to help secure the future of the State's dairy farmers and their industry. SADA was the first dairy industry association in Australia to launch its own brand, and the response from consumers has been overwhelming and sales continue to grow.

The fund has contributed over \$1,000,00 to more than 30 projects across Australia since 2014.

The Board is looking for suitably qualified candidates to assist with the ongoing governance of the fund as it continues to grow. Candidates with a passion for the dairy industry and South Australian agriculture are encouraged to apply. Experience and knowledge in at least two of the following areas would be

preferred:

- Governance skills
- A background in either the for-profit or not-for-profit sector
- A high level of financial literacy
- Connection with the dairy industry and/or dairy communities
- A background in dairy related research and/or extension
- Communication and public relations skills

Formal qualifications in agriculture, business and/or graduate of the AICD would be viewed favourably.

Please contact Tom Cosentino, Executive Officer of the SADIF on 08 8293 2399 or at [eo@livestocksa.org.au](mailto:eo@livestocksa.org.au) for further details.



South Australia's average milk production per cow is consistently the highest in Australia.

# SA DAIRY SUMMIT

The South Australian Dairy Industry produced 496 million litres of milk in 2018-19 from more than 66,000 cows, bringing more than \$234 million in farm gate revenue.

The SA Dairy Summit 2020 will take place in Adelaide on **Wednesday 25 November 2020 10am– 3pm at the Arkaba Hotel, 150 Glen Osmond Rd, Fullarton.** This event is being driven by SADA the SA Government and the Dairy Industry Association of Australia, (DIAA).

In March 2019 the *South Australian Dairy Industry Action Plan 2019 -2024* was launched and in July 2019 the SA Government committed itself to increasing overall Gross State Product by 3%. In November 2019 the first SA Dairy Summit took place with The Dairy Industry Action Plan as the base document for the summit.

The purpose of this second summit is to examine the outcomes from the first summit on all elements of the dairy industry value chain to improve the performance of the dairy industry in South Australia. This includes regulatory arrangements which may improve the SA dairy product.

The summit will bring all players in the dairy industry in South Australia together to identify pathways to achieve the aims of the Dairy Industry Action Plan and highlight industry's contribution to the Government's ambition for a 3% increase in Gross State Product.

## Around the grounds

- Ash attended a food safety and reliability webinar as part of the traceability work. This will be some of the core standards that will have to be adhered to by the industry.
- Andrew was involved with the quarterly PPSA PIRSA meeting. The Bureau of Meteorology provided a seasonal update predicting a wetter than average spring. In addition, it was announced that the Bureau will be working on a trial with PIRSA on the decisions where producers need weather information. Issues discussed at the meeting included the water allocation plan in the outback, with PIRSA indicating that as their objective is to develop pastoralism, need water security; the on-farm emergency water infrastructure rebate scheme – State Government trying to find funds and those who have already made applications are being assessed; the drought program – continues to be rolled out; R&D funding – with less levy funding, SARDI funding is being reduced; and climate change – PIRSA wants to work with industry on a carbon farming implementation road map.
- Progress has resumed with value added dairy courses. The Department of Innovation and Skills is keen to meet with SADA to discuss course programs and funding.

To secure your seat, please ring the SADA office on 8293 2399 or Email [sada@sada.asn.au](mailto:sada@sada.asn.au) prior to the 16 November 2020

### BUSHFIRE ATTACK LEVEL (BAL)

Bushfire Attack Level	Description
BAL-FZ	Direct exposure to flames from fire, in addition to heat flux and ember attack
BAL-40	Increasing levels of ember attack and burning debris ignited by windborne embers together with increasing heat flux with the increased likelihood of exposure to flames
BAL-29	Increasing levels of ember attack and burning debris ignited by windborne embers together with increasing heat flux
BAL-19	Increasing levels of ember attack and burning debris ignited by windborne embers together with increasing heat flux
BAL-12.5	Ember attack
BAL-Low	There is insufficient risk to warrant specific construction requirements

### WHAT IS A BUSHFIRE ATTACK LEVEL (BAL)

A Bushfire Attack Level (BAL) is a measure of the severity of the potential exposure to ember attack, radiant heat and direct flame contact by a building.

BAL establishes the requirements to construct a bushfire resilient building and influences the types of materials that need to be used to increase the protection of the building from bushfire attack.

BAL takes into consideration:

- type of surrounding vegetation;
- how close the building is to the vegetation;
- slope of the land (ie. fire runs more readily and with greater intensity uphill); and
- the Fire Danger Index applicable to the region.

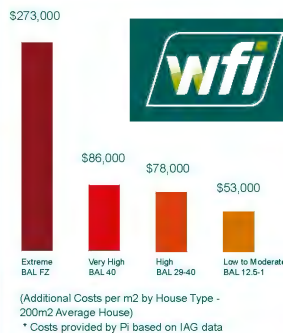
### BUILDING CODES & BAL

Following the 2009 Victorian bushfires, the Australian Building Codes Board adopted a national bushfire standard for residential buildings. The new Standard, 'AS3959-2009 Construction in bushfire-prone areas', aims to improve the ability of a building to withstand bushfire attack.

The standard sets out the building requirements for house design and construction according to the BAL that it falls into.

Contact your local fire authority for assistance with working out the level of your property. Your local government body can advise about the specific requirements of a BAL certificate by a qualified assessor.

### POTENTIAL ADDITIONAL COST TO REBUILD\*



### HOW MUCH DOES IT COST TO REBUILD AFTER A BUSHFIRE?

The chart above outlines the potential additional rebuild costs according to BAL.

The requirements for house design and construction vary according to the BAL.

Importantly, the majority of buildings in bushfire-prone areas may predate current bushfire regulations. Therefore, if you live in a bushfire prone area it may now cost significantly more to rebuild your home under the new Standards.

A typical four bedroom home in a high risk bushfire area (BAL code FZ) can cost more than \$100,000 extra to rebuild and meet the new Standard to fire proof homes.

### CLEAN UP COSTS

The costs of demolition and clean up should be included in your sum insured, or the terms of your policy. It is important to consider these costs when deciding how much it will cost to rebuild after a bushfire.

If asbestos is likely to be present on your property, a licensed asbestos removalist should be engaged to do the cleanup work. If you are insured, your home insurer may organise and assist in cleaning up, securing your home and removal of debris. Hazardous materials that may be present after the fire include:

- LP gas cylinders;
- ashes, especially from burnt treated timbers (such as copper chrome arsenate or 'CCA');
- garden or farm chemicals;
- medicines; and
- metal and other residues from burnt household appliances.

### HOW MUCH DO CLEAN-UPS COST?

Where there is significant damage to a home or a home is destroyed completely, clean-up costs can reach the tens of thousands of dollars.

\$46,000 is the average cost for debris removal

\$68,000 is the average cost for debris removal for asbestos properties

Source: IAG data from current debris removals after the 2019-2020 Christmas period fires.



SA Dairyfarmers' Association Inc  
Unit 5, 780 South Road, Glandore SA 5037  
P: 8293 2399 E: [sada@sada.asn.au](mailto:sada@sada.asn.au)  
[www.sada.asn.au](http://www.sada.asn.au)  
Or find us on Facebook

# SADA NEWSLETTER NOVEMBER 2020

## The role of SADA in supporting SA dairy farmers

The South Australian Dairy Industry Action Plan has placed South Australia's dairy industry way ahead of the rest of the other Australian jurisdictions in positioning our industry to be ready for the future. The plan, which is focussed on partnerships for premium has seen new levels of communication across the supply chain in South Australia.

The new levels of communication means that SADA has worked with processors as well as producers in advancing the milk supply pathway. All of this work has been focussed on increasing output and the South Australian Government has accepted the industries ambition to increase production by 200 million litres by 2030.

Part of building those relationships has included SADA working with the ACCC and ADF to build platforms that form the basis of minimum standards that should be afforded producers by processors through the Dairy Industry Code of Practice. That code of practice has seen new levels of fairness in the contracting environment between processors and producers not only in South Australia, but across the country.

SADA has embarked on a number of projects which demand greater partnerships across the supply chain. These projects are investigating technologies which will become linked with supply chain management. SADA will lead the way nationally in developing these tech-

nologies. The jurisdictions that have them first will be the jurisdictions which succeed. However, to maintain this edge SADA will need to engage across the supply chain. All of this work is aimed at two goals, firstly, to ensure that South Australian dairy, is better positioned than any other jurisdiction moving into the future, and secondly, to ensure that the South Australian Dairy farmer is the best positioned of all dairy farmers in the nation to be able to take advantage of the opportunities these relationships offer.

SADA is consistently being recognised as the jurisdiction that is doing well for its members. We remain committed to our members and we aim to see them thrive. Equally, we continue to welcome the feedback and comment that we receive from members around a great range of topics. Please let us know what you are thinking.

Due to recent developments with the Covid19 outbreak in SA, SADA took the decision to postpone the SA Dairy Summit till early 2021.

We will be back in touch

## Dairy Australia appoints new Board Directors at 2020 AGM

Dairy Australia members today elected three Board Directors at the organisation's 2020 Annual General Meeting (AGM), which was held online due to COVID-19 restrictions. Six candidates stood for election for three vacant Board Director positions. Tania Luckin and Roseanne Healy were re-elected respectively as a Milk Producer Director and an Agribusiness, Innovation and Change Management Director, while Paul Roderick was elected to the Board for the first time as a Milk Producer Director.

Dairy Australia is focused on supporting the implementation of the dairy plan through our own new strategic plan." More information including a recording of the AGM are available on the [Annual General Meeting](#) page.

## A new milk pricing guide milkvalue.com.au

The Australian Dairy Products Federation (ADPF) have launched a new website called: [milkvalue.com.au](http://milkvalue.com.au)

To the credit of ADPF they have recognised that the conduct of some processors has been suboptimal in the past and that there have been adverse outcomes in the industry as a result. The ADPF has committed itself to creating better communication across the supply chain including farmers.

By launching the website, the ADPF is offering transparency hitherto not seen in the Australian Dairy industry, with a particular focus on farm gate dairy milk pricing.

The ADPF has undertaken the Milk Value Portal initiative with the support of mem-

ber and non-member dairy processors across Australia to provide weighted average milk prices paid, that are reflected in the Farmgate Milk Value Tool.

The ADPF has developed this portal to enable a better understanding of how milk pricing works and the factors affecting milk prices offered to farmers across Australia. The portal offers a single source of verified information on farm-gate milk prices available to farmers in each region. The processors supporting the initiative can be found on the website.

The ADPF is the peak policy body representing commercial, post farm-gate members of the Australian dairy industry, including processors, traders and marketers of Australian dairy products.

The Milk Value Portal delivers on Commitment 5 of the draft Australian Dairy Plan, which aims to “restore trust and

transparency between farmers and processors to strengthen industry confidence”.

It has been enabled by the mandatory Dairy Code of Conduct which became effective on 1 January 2020, requiring processors to publish standard milk supply agreements, including minimum pricing, by 1 June each year.

The Milk Value Portal aims to offer transparency and insight for farmers, service providers, policy makers and other observers by addressing the complex question “What is the farm gate milk price?”

SADA welcomes this initiative and urges farmers to visit the ADPF’s website to explore what is being offered by the ADPF.

**A Milk Value Portal webinar will be held 11:30-1pm on Tuesday 15 December 2020.**



## Moving Stock On Roads

SADA has received a number of inquiries regarding the movement of stock across roads. Currently, in South Australia there is no specific legislation which has created offences regarding the movement of stock across roads and the movement of stock across roads remains legal and effectively unregulated by the state government. Nevertheless, councils may have by laws impacting on their area and if you live in a particular district you should check with your council as to what their policy position and by-laws are.

However, that is not to say that farmers are absolved of any form of responsibility when it comes to the movement of stock on public roads or streets. Farmers are still under a duty, imposed by

common law, to make sure that they take all proper care in protecting themselves, their employees and the public at large from adverse impacts of stock moving. Just because there isn’t a criminal law or a by-law it does not mean that a farmer cannot be sued by an injured party arising out of the farmer’s negligence.

Any person still has a duty of care to others around them and farmers are no different.

So in terms of a farmer doing the right thing (as well as protecting themselves from liability) a good place to start is with the guidelines issued by government.

A good example [here](#)

These guidelines, if complied with, will assist any farmer in resisting a claim made against them by an injured party if

it comes to that.

Councils may also issue their own guidelines such as the [Grant Council](#):

Equally compliance with a local council guideline may also assist with resisting a claim for damages if something goes wrong.

SADA does not presently support legislating in the stock crossing space as the last thing farmers need is even more regulations telling them how to do their business. However, SADA does encourage all of its members who move stock to do so carefully and mindfully of other road users not only to prevent injury or harm in the community, including farmers, but also to prevent the government from thinking that it needs to legislate in this space.

SADA continues to lobby the SA Government to support underpass construction



Australian Government

## AUSTRALIAN APPRENTICESHIPS

Your Life Your Career. Your Future.

### Support for businesses to retain apprentices and trainees

Employ apprentices?

JobTrainer could support you to pay their wages and keep your apprentices and trainees working.

As an employer of an Australian Apprentice you may be eligible for financial assistance from the Australian Government to help with hiring and training an apprentice.

From 1 July 2020 the Australian Apprenticeships Incentives Program (AAIP) was scheduled to be replaced with a new, simplified and streamlined incentives program for employers of apprentices and trainees, the Incentives for Australian Apprenticeships (IAA).

However, due to the impact of the COVID-19 pandemic on employers of Australian Apprentices, the Government has revised the implementation schedule of the IAA.

The IAA will now commence from 1 July 2021.

This decision has been made to minimise disruption to employers and Australian Apprentices in these times of significant economic uncertainty.

The full suite of incentives will continue to be available to employers of Australian Apprentices through the [Australian Apprenticeships Incentives Program](#).

Following the introduction of the IAA from 1 July 2021, employers claiming incentives for an apprentice or trainee who commenced prior to 1 July 2021 will be grandfathered under the AAIP.

### Dairy Award Rates

New Award rates have been published for the pastoral sector, including dairy farms. The new pay rates apply from the first pay period that starts on or after 1 November 2020.

The Pastoral Award 2020 replaces Pastoral Award 2010.

Can be accessed on the SADA Website.



### Call for Applications

### Dairy Passport

Dairy Passport is an online platform with ready-to-use resources and record keeping tools for dairy farm businesses and their employees. It is available by registering at [dairypassport.com.au](http://dairypassport.com.au).



## Dairy Passport

For employers, Dairy Passport makes it easy to get new employees working safely on-farm and to support them in driving their own career growth:

- Setup, track and manage team members and link them to on-farm tasks and training to meet compliance and governance requirements, and skill and career development
- Access customisable templates to create Standard Operating Procedures (SOPs) and policies that are regularly updated for current regulations and recommended practices
- Seamlessly share SOPs, policies and updates with team members via desktop and mobile devices to ensure information can be accessed when and where it is needed

Access onboarding tools and coaching resources to support new employees during their first 90 days on farm

#### Employees working on a dairy farm

For employees, Dairy Passport helps them to access what they need and when they need it to be safe, capable and successful on a dairy farm:

- Setup, track and manage their employment and obligations with farm businesses
- Feel welcome and understand the farm business expectations, practices and culture via onboarding and coaching resources

Access the latest information and documents as updated on-farm specific to their role.

The South Australian Cattle Industry Board invites applications for small project funding up to \$10,000 which will benefit the State's beef and dairy cattle industry.

Projects are to be delivered within the 2020-21 financial year with funding to be drawn from the SA Cattle Industry Fund.

Cattle Industry Fund investment priorities are:

1. Maintaining market access and securing new markets
2. Efficient and sustainable production
3. Business management and skills development
4. Advocacy

For more information about funding guidelines and how to apply, visit: [www.livestocksa.org.au/cif-apply-for-funding/](http://www.livestocksa.org.au/cif-apply-for-funding/).

#### SUBMIT APPLICATIONS TO:

Tom Cosentino - Cattle Industry Fund Board Executive Officer  
Livestock SA  
Unit 5, 780 South Road  
GLANDORE SA 5065  
eo@livestocksa.org.au

Applications are due by COB  
30 November 2020

## Dairy's farm plastics recycling target receives Federal funding boost

The dairy industry's target to recycle 100% of plastic silage wrap waste on farms by 2030 has received a big boost, with the award of \$965,400 grant to Dairy Australia from the Commonwealth Government's National Product Stewardship Investment Fund.

## Dairy organisations launch bold plan to transform industry profitability, confidence and unity over next five years.

- **Increased profitability across the dairy supply chain** – with greater than 50% of farms achieving profit of at least \$1.50 EBIT/kgMS (average over five years)
- **Increased confidence of dairy businesses in the industry's future** – with more than 75 per cent of farmers and processors confident about the future
- **Greater unity across the industry by working together to address key challenges** – with more than 75% of farmers and processors positive about industry unity.



**Good people to know.**

## Farm security: Tips for protecting your property

**Tool Time for Thieves**  
Engraving and Data Dot technology, when used in conjunction with the National Equipment Register, can provide police with a means of identifying stolen gear.

## Around the grounds

- John Hunt and Andrew met with Shadow Minister for Primary Industries, Hon Clare Scriven to discuss current dairy industry issues.
- Andrew and Tom Consentino (SADIF) attended the Limestone Coast Leadership Program Graduation Event in Naracoorte. SADIF is funding a position in this program in 2021.
- Ash worked on the traceability project, reviewing some of the material from the dairy consultations and advisory group.
- Elf attended a Free Trade Agreement webinar outlining the new opportunities arising from Brexit. Britain is again looking to its former empire and commonwealth for trade partners, which it so rudely abandoned when entering the Common Market in 1972, to establish pathways and opportunities for future trade.
- John, Elf and Andrew attended the ADF National Council Australian Dairy Plan update briefing. This meeting outlined progress and allowed a full and frank exchange of views among members.
- Elf met with Paris Creek with a view to returning the SADA Fresh export product to South Australia. This may lead to the development of a new SADA Fresh green (organic) export milk product for the export market. Dairy has thus far been unmolested by the trade embargos imposed by China on other Australian products. We have only just started to penetrate the market again after the Covid-19 closure.
- Andrew met with Mark Thomson from TAFE SA to discuss opportunities in training for the dairy industry and the development of Flexible Industry Pathways for training within Secondary Education.
- Andrew met with Melissa Hunter (Dairy SA) and Geoff Raven (DairySafe) to discuss industry collaboration opportunities including the DairySafe strategic planning day, Young Dairy Network meeting, Meeting with Shadow Primary Industries spokesperson and 2020 Dairy Summit.
- Elf completed a number of farm visits with members in the mid north.
- Elf attended a farm and continued to develop a waste water management plan for a member.



SA Dairyfarmers' Association Inc  
 Unit 5, 780 South Road, Glandore SA 5037  
 P: 8293 2399 E: [sada@sada.asn.au](mailto:sada@sada.asn.au)  
[www.sada.asn.au](http://www.sada.asn.au)  
 Or find us on Facebook

# SADA NEWSLETTER DECEMBER 2020

## SADA President 2020 Wrap Up

I'm not sure if you could ever script the last 12 months and the challenges it has held for industry, not knowing what next week looks like let alone next year.

The Dairy processing sector has been ahead of most situations and have put processes in place to ensure our milk gets collected and processed. Through PIRSA and Dairy Australia we had more than enough information to keep our farms, our staff and our industry protected as much as possible.

It has been a continued good season for most in SA with good rainfall and temperatures creating good growth and fodder reserves. Fodder prices for hay and silage are lower than normal and with good milk prices and exceptional beef prices, things are shaping up to be a good year.

Nationally the Dairy Plan has reached good results with pillars 2 – 5 been taken into account in Dairy Australia operation plan. This is most important as has bearing to inside farm gate. More difficult to get consensus on dairy structure though things getting ticked off slowly.

We are looking forward to continuing the SA Action Plan, we have the capacity to grow and our main objective is to help farmers and processors achieve that goal. The Summit will be held in the new year

with an Agenda to go out shortly so have thinking caps on and we will achieve our results.

Thanks to our dedicated team in the SADA office, certainly challenging not knowing if working remotely or in office, juggling kids and school. Results have been great and is much appreciated by the board and members.



To our Board, thank you for your dedication & time you put into our industry. It does take a lot of thought to make a difference but I recon we are starting to see some of our strategy pay off.

To our members, thank you for your continued support. It is sometimes hard to measure advocacy successes though having a plan to measure against gives us a clear view of what we have achieved.

To the Dairy SA team, politicians, processors & service providers, thank you for your input this year. It has been grate working together Collaboratory to make our industry stronger. It is clear to see SA has no borders when it comes to working together & are the envy of other states.

Hope everyone has a safe & merry Christmas with family, friends & cows & look forward to catching up with you next year. Regards, John Hunt

## ADF AGM Update

The Annual General Meeting of Australian Dairy Farmers (ADF) was held 26 November via an online meeting, marking the first time in our 78-year history we have met via digital means. COVID restrictions required ADF to rethink our engagement in line with regulator and community expectations.

We recorded our highest number of member participation from right across Australia. Members elected Queensland Dairyfarmers' Organisation President Brian Tessmann as a new business director. I congratulate Brian on his election and welcome him to the ADF Board.

Unfortunately, some members did experience difficulties in casting their votes. In accordance with ASIC requirements that members all have an opportunity to be heard throughout a virtual meeting, it was necessary for this to be rectified before the business of the meeting could be considered further.

The ADF Board offers its sincere apologies for these complications. We endeavoured to anticipate potential problems and conducted three trials through the course of the week – including on Thursday morning just prior to the AGM.

ADF contracted the services of an independent election services platform specifically so that members can be assured of the integrity of the votes cast.

ADF will be provided with the data collected throughout the AGM and will take the learnings from this meeting to help inform the format of any future virtual meetings.

As there is still one business director position to be filled, per our constitution, the ADF National Council will undertake the next steps in filling this vacancy. We will update members once this has been determined.

The ADF Board extends its thanks again to the members in attendance for their passion and interest in the dairy industry and engagement throughout the AGM.

Yours sincerely,  
 Terry Richardson

### [A new year and positive new beginnings for global dairy farmers](#)

As a challenging 2020 draws to a close, the global outlook for dairy is optimistic thanks to strong commodity prices, forecast economic growth in many regions and improving consumer sentiment, according to agribusiness specialist Rabobank. Read the full report here.

# \$4.45m boost to seasonal and regional workforce

The State Government has [announced a \\$4.45 million support package](#) to help boost and fill seasonal and regional workforce vacancies across South Australia over the next six months.

The new Seasonal and Regional Workforce Program, recognises the significant impact of COVID-19 restrictions and border closures on reducing the pool of available workers to the agriculture, tourism and hospitality sectors in regional South Australia. The program will provide much needed support to connect those seeking work with positions available.

This announcement follows the successful Seasonal Jobs SA website launched in May to help connect seasonal workers to essential agricultural jobs in South Australia. This is especially important for the primary industries sector, with up to 9000 workers expected to be needed across the industry before January to help harvest crops.

## SEASONAL & REGIONAL JOBS SOUTH AUSTRALIA

There are subsidies and incentives available for job seekers and employers as part of the program. These include:

- A Regional Jobs Support and Incentive Program for students to subsidise cost burdens and address impediments faced by students in taking up regional tourism and hospitality jobs. There will be two categories based on distance from the city - with up to \$500 available for inner regional areas and \$2,000 for outer regional areas, for a minimum of six weeks' work.
- A Regional Workforce Coordination and Collaboration initiative consisting of in-region facilitation to collectively support workers moving to regions to be delivered through the state's eight Regional Development Australia (RDA) Boards across the state.
- A support program to reduce the cost to industry for Medi-Hotel quarantine for Pacific Island workers.

- A promotion and awareness campaign, including events to drive worker recruitment and attract workers to seasonal and regional work vacancies in South Australia

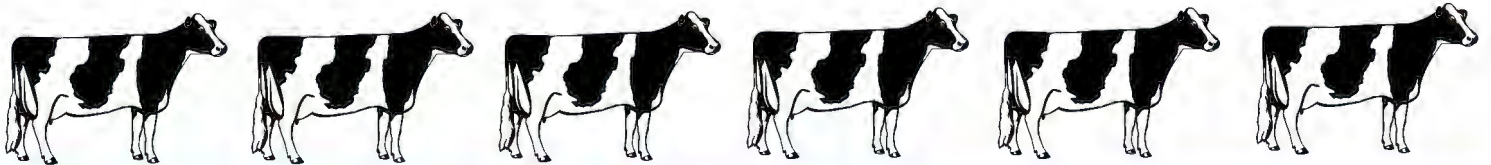
The establishment of a Regional Workforce Advisory Group to monitor progress of the overall program including matching demand to supply, addressing issues and to provide advisory support.

*"To have more than 80,000 people visiting the Seasonal Jobs SA website is a great result and with plenty more jobs available in the coming weeks and months we want anyone who has had their employment affected by coronavirus to look into it."*

To support the program, a redevelopment of a Seasonal Jobs SA website is underway to expand it to a Seasonal and Regional Jobs SA website. The site is set to launch in the coming weeks, along with a promotional and awareness campaign, to put a spotlight

on jobs that are in demand across primary industries, as well as regional tourism and hospitality roles.

To keep updated as the program develops, visit: [www.seasonaljobs.sa.gov.au](http://www.seasonaljobs.sa.gov.au), and for specific information about the Regional Jobs Support and Incentive Program visit <https://business.sa.gov.au/regional-jobs>



# 2021 DairySA Central Conference

THURSDAY 18 MARCH 2021

McCracken Country Club, Victor Harbor



**Issues note** Fall armyworm (FAW) is an emerging pest first detected in Australia in February 2020 that has the potential to negatively affect several agricultural sectors including the dairy industry. The pest, which originates in the USA, is reported to feed on over 350 host plants and can cause significant damage to many crops, in particular maize, sorghum and C4 pastures.



## New fair trading law needed to enhance

### Australia's perishable agricultural markets

10 Dec 2020

Australia's perishable agricultural goods markets need a new fair trading law to address harmful practices arising from bargaining power imbalances that are not covered by current laws, the ACCC has found.

The ACCC's [Perishable Agricultural Goods Inquiry Report](#), released the introduction of an unfair trading practices prohibition, and the strengthening of the small business unfair contract term protections and the Food and Grocery Code of Conduct.

The ACCC has recently published;

### [Dairy Code: initial observations on compliance.](#)

This is an update outlining our views on dairy processors' compliance with the Dairy Code of Conduct, one year since the Code came into effect and six months since processors were required to publish their standard form milk supply agreements.



## Crucial checkpoint finds Basin Plan cushioned Murray-Darling from worst drought on record, but more effort is needed.

The Murray-Darling Basin Authority's review of the Basin Plan shows there has been good outcomes since the Plan's inception in 2012, while also highlighting the need for more effort to achieve a healthy Basin that supports prosperous industries and communities.

## MEMBER UPDATE DECEMBER 2020- BROADACRE AND DAIRIES

As we approach the end of an unusual and difficult year there are changes to the Pastoral Award 2020. Copies of the previous Pastoral award 2020 will not apply from now on, but entitlements such as underpayment of wages that may have occurred prior to now will apply.

### Pastoral Award 2020 - changes re allowances and calculation of overtime.

Recently the annual wage review 2019/2020 resulted in adjustments to some expense related allowances in the Pastoral Award. This means that some expense related allowances have changed with effect from 1<sup>st</sup> pay period starting on or after 30<sup>th</sup> November 2020.

The decision was unfortunately was not available until more recently. Attached are two attachments dealing with the changes to allowances effective from the first pay period commencing on or after 1<sup>st</sup> November 2020 and the

method for calculating overtime and in particular for casual employees.

### Calculation of Overtime

The Award as confirmed the formula for calculating overtime. The calculation for casual employees involves using the fulltime rate, plus the overtime %, plus the 25% casual loading based on the fulltime rate. The Award provision appears in Attachment C.

### Christmas & Social Events

As Christmas celebrations are around the corner, employers need to make sure employees aware that they are to remain safe both during and after the Christmas party.

Alternative transport arrangements should be made before the day of the work Christmas Party to discourage drink driving.

The employer and employee have a mutual obligation to ensure employees who drive after the party are fit to do so. This may result in the employer arranging alternative mode of transport for the employee who is not fit to drive in accordance with the road laws.

Employers' have a duty of care to take reasonable action to ensure that they inform all staff that inappropriate behaviour and breaches of the employers' instructions may result in disciplinary action including termination of employment.

A memo to employees as soon as possible can be issued to ensure that all employees so that they are aware of their obligations.

Please find full updates on our website [here](#).



## Funding for dairy businesses to improve energy efficiency, reduce energy costs and lower energy consumption

The Energy Efficient Communities Program – Dairy Farming Business Grants provides dairy farming businesses with grants of up to \$20,000 to improve energy efficiency, reduce energy costs and lower on-farm emissions.

The objective of this grant opportunity is to support Australian dairy farming businesses to save energy through:

- replace existing equipment with higher efficiency equipment
- install or replace existing system run more efficiently
- carry out on-farm energy audits
- carry out monitoring of energy usage and emissions



SADA was pleased to see **34** of our great South Australian Dairy farming members receive more than **\$595k** in grant monies through this program. Together with ADF we were keen advocates for the program and delighted with the support South Australia received.

We'd like to receive your snapshot of your innovative project if you'd like to share a photo during constructions or at completion, let us know if you get stuck or need a hand with the project implementation.

## BushFire: Risking underinsurance

### CHECK YOUR INSURANCE POLICY

What hazards is your home exposed to? Does your insurance policy cover those risks? Talk to an insurance professional to ensure you understand exactly what your insurance covers. If you would like to review your insurance policies or you would like further information about the risks of underinsurance, contact your WFI local area manager.



## Around the grounds

- John and Ash met with La Casa Del Formaggio around Block Chain and Traceability.
- Ash met with Melanie Wishart for the NGTAG Steering committee to discuss the recent NGTAG and to finalise the 2021 NGTAG calendar including Steering Committee meetings and lock in the engagement model including speakers for the first meeting of 2021.
- John had the final ACCC Dairy Consultative Committee meeting.
- Andrew met with Melissa Hunter and Geoff Raven for their fortnightly catch-up.
- The Board and Staff had the December Face to face board meeting followed by a Dairy Industry Cocktail party, it was a great opportunity to touch base with many local MP and Minister Basham. Including; Clare Scriven, Terry Stephens, John Darley, Adrian Pederick, David Ridgway, Nicola Centofanti, Troy Bell and Nick McBride.
- Andrew, Alyssa, John and Nick with Joe Keynes and Allan Piggott from Livestock reviewed the SADA/Livestock SA MOU. The group decided to organize an external audit on both organisations.
- Andrew and John Elferink attended the PPSA PIRSA quarterly meeting. There was a seasonal outlook from the Bureau of Meteorology and a presentation from DEW on the carbon farming roadmap. There was also details on the State Budget, drought assistance (ongoing and recovery), bushfire response and arrangements for this summer, as well as the proposed adoption and innovation hub.
- Ash and John met with VinoTrust is finalise costs for the traceability project and discuss next steps for the New Year. An application will now be written and submitted to SADIF.
- John and Tom continue to work with a dairy farmer to advance a methane capture project.

**Australian Dairy Industry In Focus 2020**  
report now available